



## UK Office

### Everest Biotech Ltd

Cherwell Innovation Centre  
77 Heyford Park  
Upper Heyford  
Oxfordshire  
OX25 5HD  
UK

Enquiries:

[info@everestbiotech.com](mailto:info@everestbiotech.com)

Sales:

[sales@everestbiotech.com](mailto:sales@everestbiotech.com)

Tech support:

[support@everestbiotech.com](mailto:support@everestbiotech.com)

Tel: +44 (0)1869 238326

Fax: +44 (0)1869 238327

## US Office

### Everest Biotech c/o Abcore

405 Maple Street, Suite A106  
Ramona,  
CA 92065  
USA

Inquiries:

[info@everestbiotech.com](mailto:info@everestbiotech.com)

Sales:

[usasales@everestbiotech.com](mailto:usasales@everestbiotech.com)

Tech support:

[support@everestbiotech.com](mailto:support@everestbiotech.com)

Tel: 888-320-4628 (toll-free)

Fax: 888-841-9041

[www.everestbiotech.com](http://www.everestbiotech.com)

**Research Use Only. Not for  
diagnostic or therapeutic use.**

## EB07591 - Goat Anti-AS160 / TBC1D4 Antibody

Size: 100µg specific antibody in 200µl



### Target Protein

**Principal Names:** TBC1D4, AS160, TBC1 domain family, member 4, RP11-159J2.1, DKFZp779C0666, Acrg embryonic lethality (mouse) minimal region ortholog, OTTHUMP00000040818, TBC (Tre-2, BUB2, CDC16) domain-containing protein, KIAA0603

**Official Symbol:** TBC1D4

**Accession Number(s):** NP\_055647.2

**Human GeneID(s):** [9882](#)

### Immunogen

Peptide with sequence C-DDPEKIEERKKSK, from the internal region of the protein sequence according to NP\_055647.2.

Please note the [peptide](#) is available for sale.

### Purification and Storage

Purified from goat serum by ammonium sulphate precipitation followed by antigen affinity chromatography using the immunizing peptide.

Supplied at 0.5 mg/ml in Tris saline, 0.02% sodium azide, pH7.3 with 0.5% bovine serum albumin.

Aliquot and store at -20°C. Minimize freezing and thawing.

### Applications Tested

**Peptide ELISA:** antibody detection limit dilution 1:128000.

**Western blot:** Approx 150kDa band observed in lysates of cell lines Daudi and MOLT4 (calculated MW of 147kDa according to NP\_055647.2). Recommended concentration: 0.1-0.3µg/ml.

**IHC:** In paraffin embedded Human Skeletal Muscle shows striated pattern staining of majority of muscular fibres. Recommended concentration, 3-5µg/ml.

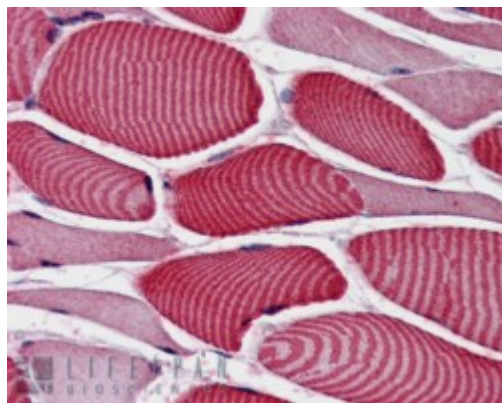
### Species Reactivity

**Tested:** Human

**Expected from sequence similarity:** Human, Dog



EB07591 (0.1µg/ml) staining of Daudi cell lysate (35µg protein in RIPA buffer). Primary incubation was 1 hour. Detected by chemiluminescence.



EB07591 (3.8µg/ml) staining of paraffin embedded Human Skeletal Muscle. Steamed antigen retrieval with citrate buffer pH 6, AP-staining.