



Everest Biotech Ltd
Cherwell Innovation Centre
77 Heyford Park
Upper Heyford
Oxfordshire
OX25 5HD, United Kingdom

everestbiotech.com

sales@everestbiotech.com

support@everestbiotech.com

Tel +44 1869 238326

Fax +44 1869 238327

Research Use Only. Not for diagnostic or therapeutic use.

Storage: For long-term storage keep aliquots at -20°C. (Store no longer than 12 months at 4°C). Minimize freezing and thawing.

EB05291-T - Goat Anti-ASC / TMS1 Antibody - Trial

Size: 20µg specific antibody in 40µl

Target Protein

Principal Names: TMS-1, target of methylation-induced silencing-1, caspase recruitment domain protein 5, apoptosis-associated speck-like protein containing a CARD, TMS, MGC10332, CARD5, PYD and CARD domain containing, TMS1, ASC, PYCARD

Official Symbol: PYCARD

Accession Number(s): NP_037390.2; NP_660183.1

Human GeneID(s): [29108](#)

Important Comments: This antibody is expected to recognise all reported Human isoforms according to NP_037390.2 and NP_660183.1.

Immunogen

Peptide with sequence C-RESQSYLVEDLERS, from the C Terminus of the protein sequence according to NP_037390.2; NP_660183.1.

Please note the [peptide](#) is available for sale.

Purification and Storage

Purified from goat serum by ammonium sulphate precipitation followed by antigen affinity chromatography using the immunizing peptide.

Supplied at 0.5 mg/ml in Tris saline, 0.02% sodium azide, pH7.3 with 0.5% bovine serum albumin.

Aliquot and store at -20°C. Minimize freezing and thawing.

Applications Tested

Peptide ELISA: antibody detection limit dilution 1:32000.

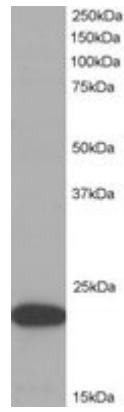
Western blot: Approx. 22kDa band observed in Hela and Human Kidney lysates (predicted MW of 22kDa according to NP_037390.2). Recommended for use at 1-3µg/ml.

IHC: In paraffin embedded Human Liver shows staining of sinusoidal lining cells. Recommended concentration, 2-4µg/ml.

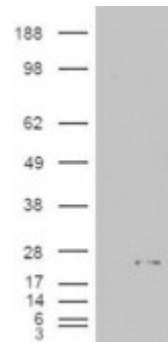
Species Reactivity

Tested: Human

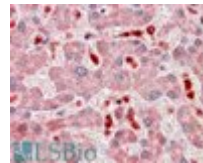
Expected from sequence similarity: Human



EB05291 (1 μ g/ml) staining of HeLa lysate (35 μ g protein in RIPA buffer). Primary incubation was 1 hour. Detected by chemiluminescence.



HEK293 overexpressing ASC (RC215592) and probed with EB05291 (mock transfection in first lane).



EB05291 (2.5 μ g/ml) staining of paraffin embedded Human Liver. Steamed antigen retrieval with citrate buffer pH 6, AP-staining.