



UK Office

Everest Biotech Ltd

Cherwell Innovation Centre
77 Heyford Park
Upper Heyford
Oxfordshire
OX25 5HD
UK

Enquiries:

info@everestbiotech.com

Sales:

sales@everestbiotech.com

Tech support:

support@everestbiotech.com

Tel: +44 (0)1869 238326

Fax: +44 (0)1869 238327

US Office

Everest Biotech c/o Abcore

405 Maple Street, Suite A106
Ramona,
CA 92065
USA

Inquiries:

info@everestbiotech.com

Sales:

usasales@everestbiotech.com

Tech support:

support@everestbiotech.com

Tel: 888-320-4628 (toll-free)

Fax: 888-841-9041

www.everestbiotech.com

**Research Use Only. Not for
diagnostic or therapeutic use.**

EB07788 - Goat Anti-ASF1A / HSPC146 Antibody

Size: 100µg specific antibody in 200µl



Target Protein

Principal Names: ASF1A, HSPC146, ASF1 anti-silencing function 1 homolog A (S. cerevisiae), RP3-329L24.1, CGI-98, CIA, DKFZP547E2110, ASF1 anti-silencing function 1 homolog A, CCG1-interacting factor A, anti-silencing function 1A

Official Symbol: ASF1A

Accession Number(s): NP_054753.1

Human GeneID(s): [25842](#)

Non-Human GeneID(s): 66403 (mouse), 294408 (rat)

Immunogen

Peptide with sequence C-EDNTEKLEDAE, from the internal region of the protein sequence according to NP_054753.1.

Please note the [peptide](#) is available for sale.

Purification and Storage

Purified from goat serum by ammonium sulphate precipitation followed by antigen affinity chromatography using the immunizing peptide.

Supplied at 0.5 mg/ml in Tris saline, 0.02% sodium azide, pH7.3 with 0.5% bovine serum albumin.

Aliquot and store at -20°C. Minimize freezing and thawing.

Applications Tested

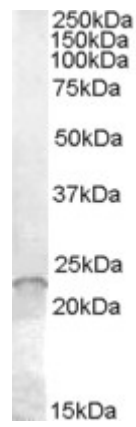
Peptide ELISA: antibody detection limit dilution 1:1000.

Western blot: Approx. 23kDa band observed in lysates of cell line Jurkat (calculated MW of 23.0kDa according to NP_054753.1). Recommended concentration: 0.01-0.03µg/ml.

Species Reactivity

Tested: Human

Expected from sequence similarity: Human, Mouse, Rat, Dog



EB07788 (0.01µg/ml) staining of Jurkat cell lysate (35µg protein in RIPA buffer). Primary incubation was 1 hour.
Detected by chemiluminescence.