

UK Office

Everest Biotech Ltd

Cherwell Innovation Centre
77 Heyford Park
Upper Heyford
Oxfordshire
OX25 5HD
UK

Enquiries:

info@everestbiotech.com

Sales:

sales@everestbiotech.com

Tech support:

support@everestbiotech.com

Tel: +44 (0)1869 238326

www.everestbiotech.com

**Research Use Only. Not for
diagnostic or therapeutic use.**

EB12627 - Goat Anti-ASIC1 Antibody

Size: 100µg specific antibody in 200µl



Target Protein

Principal Names: ASIC1, acid-sensing (proton-gated) ion channel 1, ACCN2, ASIC, BNaC2, Cation channel, amiloride-sensitive, neuronal, 2, acid-sensing ion channel 1, acid-sensing ion channel 1a protein, amiloride-sensitive cation channel 2, neuronal, brain sodium channel 2

Official Symbol: ASIC1

Accession Number(s): NP_064423.2; NP_001086.2; NP_001243759.1

Human GeneID(s): [41](#)

Non-Human GeneID(s): 11419 (mouse), 79123 (rat)

Important Comments: This antibody is expected to recognize all reported isoforms (NP_064423.2; NP_001086.2; NP_001243759.1).

Immunogen

Peptide with sequence C-NILPHHPARGT, from the C Terminus of the protein sequence according to NP_064423.2; NP_001086.2; NP_001243759.1.

Please note the [peptide](#) is available for sale.

Purification and Storage

Purified from goat serum by ammonium sulphate precipitation followed by antigen affinity chromatography using the immunizing peptide.

Supplied at 0.5 mg/ml in Tris saline, 0.02% sodium azide, pH7.3 with 0.5% bovine serum albumin.

Aliquot and store at -20°C. Minimize freezing and thawing.

Applications Tested

Peptide ELISA: antibody detection limit dilution 1:128000.

Western blot: Approx 70kDa band observed in Mouse fetal Brain lysates (calculated MW of 64.8kDa according to NP_064423.2). Recommended concentration: 0.3-1µg/ml.

Primary incubation was 1 hour.

IHC: Paraffin embedded Human Brain (Cortex) and Pancreas. Recommended concentration: 5µg/ml.

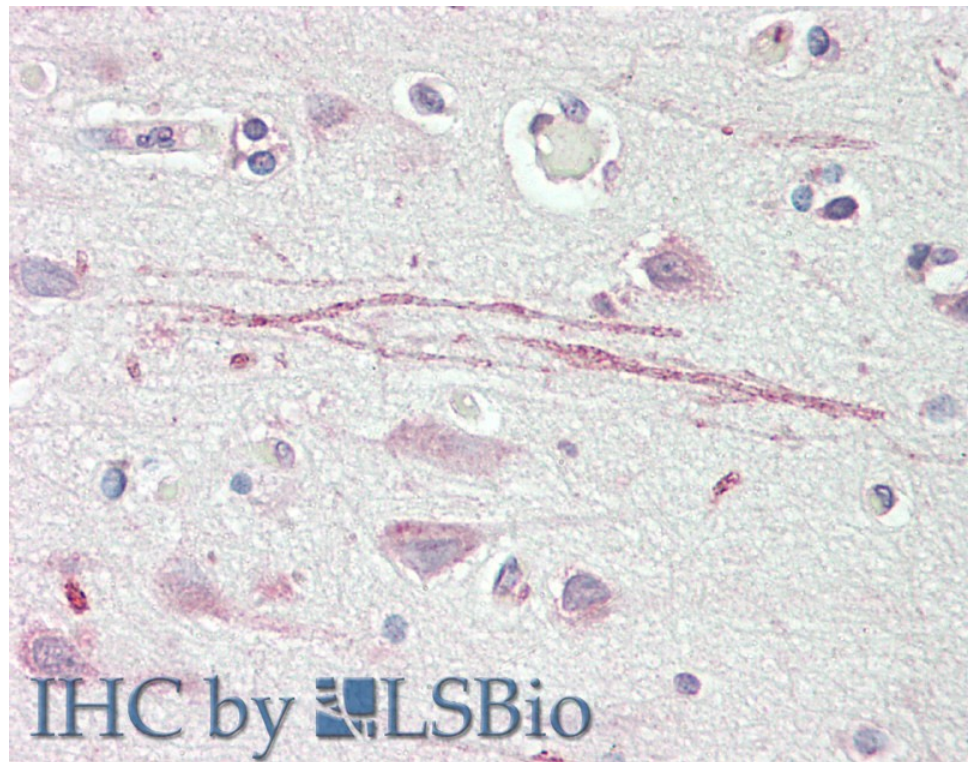
Species Reactivity

Tested: Human, Mouse

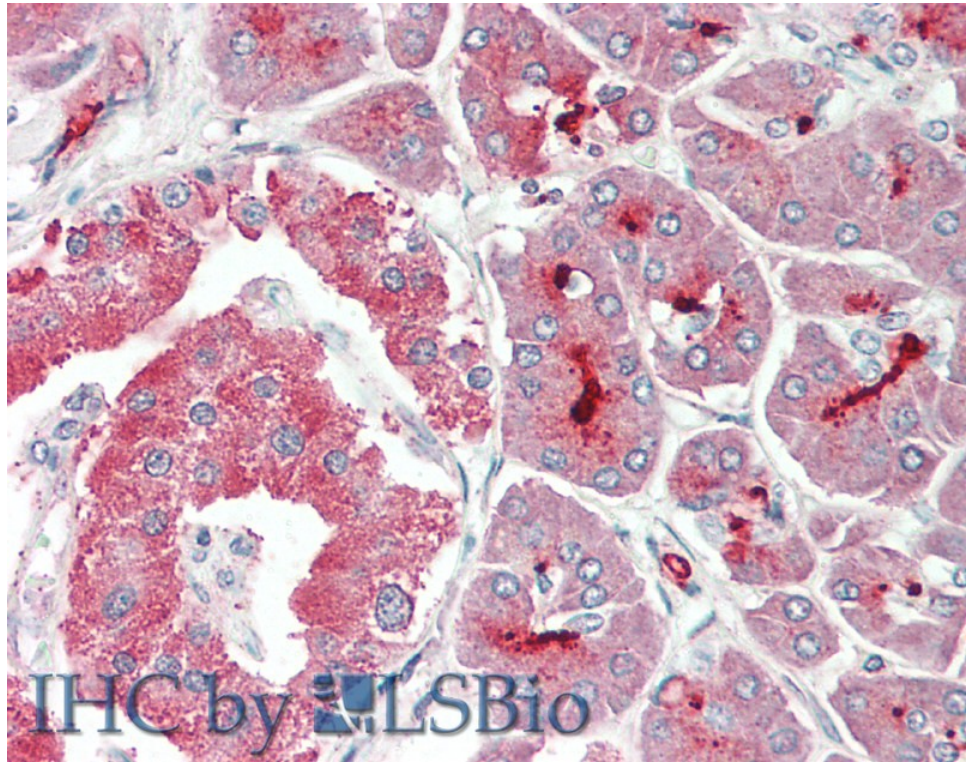
Expected from sequence similarity: Human, Mouse, Rat, Dog, Pig, Cow



EB12627 (0.3 μ g/ml) staining of Mouse fetal Brain lysate (35 μ g protein in RIPA buffer). Detected by chemiluminescence.



EB12627 (5 μ g/ml) staining of paraffin embedded Human Cortex. Steamed antigen retrieval with citrate buffer pH 6, AP-staining.



EB12627 (5µg/ml) staining of paraffin embedded Human Pancreas. Steamed antigen retrieval with citrate buffer pH 6, AP-staining.