



International Office

Everest Biotech Ltd

Vector Laboratories, Inc.
6737 Mowry Ave
Newark, CA 94560
United States

Customer Service:

customerservice@vectorlabs.com

Technical Service:

technical@vectorlabs.com

Tel: +1 (800) 227-6666

www.everestbiotech.com

**Research Use Only. Not for
diagnostic or therapeutic use.**

EB10714 - Goat Anti-Aspa (mouse) Antibody

Size: 100µg specific antibody in 200µl



Target Protein

Principal Names: Aspa, aspartoacylase, RP23-213I10.1, Acy-2., Acy2, nur7, OTTMUSP00000006437, aminoacylase 2, aminoacylase-2, small lethargic

Official Symbol: Aspa

Accession Number(s): NP_075602.2

Non-Human GeneID(s): 11484 (mouse), 79251 (rat)

Immunogen

Peptide with sequence C-TLSAKSIRSTLH, from the C Terminus of the protein sequence according to NP_075602.2.

Please note the [peptide](#) is available for sale.

Purification and Storage

Purified from goat serum by ammonium sulphate precipitation followed by antigen affinity chromatography using the immunizing peptide.

Supplied at 0.5 mg/ml in Tris saline, 0.02% sodium azide, pH7.3 with 0.5% bovine serum albumin.

Aliquot and store at -20°C. Minimize freezing and thawing.

Applications Tested

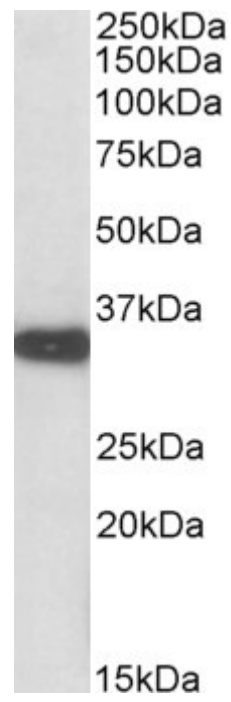
Peptide ELISA: antibody detection limit dilution 1:8000.

Western blot: Approx 35kDa band observed in Mouse and Rat Kidney lysates (calculated MW of 35.3kDa according to NP_075602.2). Recommended concentration: 0.01-0.03µg/ml.

Species Reactivity

Tested: Mouse, Rat

Expected from sequence similarity: Mouse, Rat



EB10714 (0.01 μ g/ml) staining of Mouse Kidney lysate (35 μ g protein in RIPA buffer). Primary incubation was 1 hour. Detected by chemiluminescence.