



UK Office

Everest Biotech Ltd

Cherwell Innovation Centre
77 Heyford Park
Upper Heyford
Oxfordshire
OX25 5HD
UK

Enquiries:

info@everestbiotech.com

Sales:

sales@everestbiotech.com

Tech support:

support@everestbiotech.com

Tel: +44 (0)1869 238326

Fax: +44 (0)1869 238327

US Office

Everest Biotech c/o Abcore

405 Maple Street, Suite A106
Ramona,
CA 92065
USA

Inquiries:

info@everestbiotech.com

Sales:

usasales@everestbiotech.com

Tech support:

support@everestbiotech.com

Tel: 888-320-4628 (toll-free)

Fax: 888-841-9041

www.everestbiotech.com

**Research Use Only. Not for
diagnostic or therapeutic use.**

EB08138 - Goat Anti-ASRGL1 / ALP Antibody

Size: 100µg specific antibody in 200µl



Target Protein

Principal Names: ASRGL1, ALP, asparaginase like 1, ALP1, FLJ22316, asparaginase-like 1 protein

Official Symbol: ASRGL1

Accession Number(s): NP_001077395.1; NP_079356.3

Human GeneID(s): [80150](#)

Important Comments: Both reported variants represent identical protein (NP_001077395.1 and NP_079356.3).

Immunogen

Peptide with sequence EKHEKGAQKTDCQ, from the internal region of the protein sequence according to NP_001077395.1; NP_079356.3.

Please note the [peptide](#) is available for sale.

Purification and Storage

Purified from goat serum by ammonium sulphate precipitation followed by antigen affinity chromatography using the immunizing peptide.

Supplied at 0.5 mg/ml in Tris saline, 0.02% sodium azide, pH7.3 with 0.5% bovine serum albumin.

Aliquot and store at -20°C. Minimize freezing and thawing.

Applications Tested

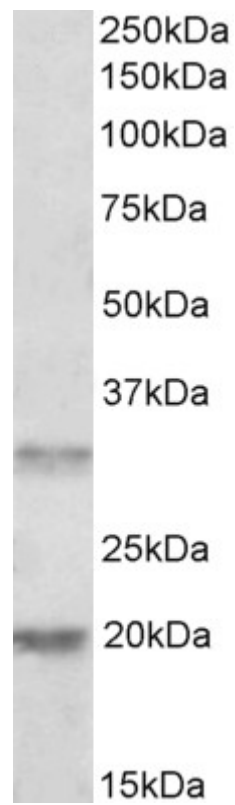
Peptide ELISA: antibody detection limit dilution 1:32000.

Western blot: Approx 34kDa band observed in Human Tosi and Lysate cell line HeLa lysates (calculated MW of 32.1kDa according to NP_001077395.1). Recommended concentration: 1-3µg/ml. An additional band of unknown identity was also consistently observed at 20kDa. This band was successfully blocked by incubation with the immunizing peptide.

Species Reactivity

Tested: Human

Expected from sequence similarity: Human



EB08138 (0.5µg/ml) staining of Human Tonsil lysate (35µg protein in RIPA buffer). Primary incubation was 1 hour. Detected by chemiluminescence.