



## UK Office

### Everest Biotech Ltd

Cherwell Innovation Centre  
77 Heyford Park  
Upper Heyford  
Oxfordshire  
OX25 5HD  
UK

Enquiries:

[info@everestbiotech.com](mailto:info@everestbiotech.com)

Sales:

[sales@everestbiotech.com](mailto:sales@everestbiotech.com)

Tech support:

[support@everestbiotech.com](mailto:support@everestbiotech.com)

Tel: +44 (0)1869 238326

Fax: +44 (0)1869 238327

## US Office

### Everest Biotech c/o Abcore

405 Maple Street, Suite A106  
Ramona,  
CA 92065  
USA

Inquiries:

[info@everestbiotech.com](mailto:info@everestbiotech.com)

Sales:

[usasales@everestbiotech.com](mailto:usasales@everestbiotech.com)

Tech support:

[support@everestbiotech.com](mailto:support@everestbiotech.com)

Tel: 888-320-4628 (toll-free)

Fax: 888-841-9041

[www.everestbiotech.com](http://www.everestbiotech.com)

**Research Use Only. Not for  
diagnostic or therapeutic use.**

## EB05247-T - Goat Anti-ATF4 Antibody - Trial

Size: 20µg specific antibody in 40µl



### Target Protein

**Principal Names:** ATF4, activating transcription factor 4 (tax-responsive enhancer element B67), CREB2, TXREB, CREB-2, TAXREB67, OTTHUMP00000199130, activating transcription factor 4, cAMP response element-binding protein 2

**Official Symbol:** ATF4

**Accession Number(s):** NP\_001666.2; NP\_877962.1

**Human GeneID(s):** [468](#)

**Non-Human GeneID(s):** 11911 (mouse), 79255 (rat)

**Important Comments:** This antibody is expected to recognize both reported isoforms (NP\_001666.2; NP\_877962.1).

### Immunogen

Peptide with sequence C-EEVRKARGKKRVP, from the C Terminus of the protein sequence according to NP\_001666.2; NP\_877962.1.

Please note the [peptide](#) is available for sale.

### Purification and Storage

Purified from goat serum by ammonium sulphate precipitation followed by antigen affinity chromatography using the immunizing peptide.

Supplied at 0.5 mg/ml in Tris saline, 0.02% sodium azide, pH7.3 with 0.5% bovine serum albumin.

Aliquot and store at -20°C. Minimize freezing and thawing.

### Applications Tested

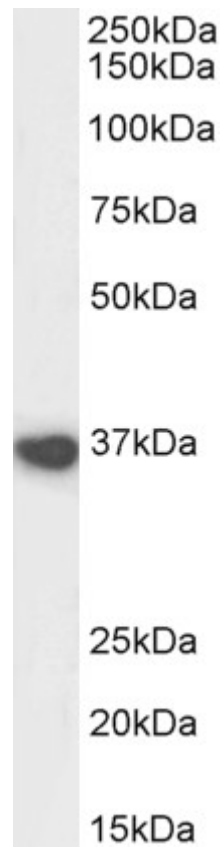
**Peptide ELISA:** antibody detection limit dilution 1:128000.

**Western blot:** Approx 35-37kDa band observed in Mouse Heart lysates (calculated MW of 38.3kDa according to Mouse NP\_001274109.1; NP\_033846.2). Recommended concentration: 0.3-1µg/ml. Primary incubation 1 hour at room temperature.

### Species Reactivity

**Tested:** Mouse

**Expected from sequence similarity:** Human, Mouse, Rat, Pig



EB05247 (1µg/ml) staining of Mouse Heart lysate (35µg protein in RIPA buffer). Detected by chemiluminescence.