



UK Office

Everest Biotech Ltd

Cherwell Innovation Centre
77 Heyford Park
Upper Heyford
Oxfordshire
OX25 5HD
UK

Enquiries:

info@everestbiotech.com

Sales:

sales@everestbiotech.com

Tech support:

support@everestbiotech.com

Tel: +44 (0)1869 238326

Fax: +44 (0)1869 238327

US Office

Everest Biotech c/o Abcore

405 Maple Street, Suite A106
Ramona,
CA 92065
USA

Inquiries:

info@everestbiotech.com

Sales:

usasales@everestbiotech.com

Tech support:

support@everestbiotech.com

Tel: 888-320-4628 (toll-free)

Fax: 888-841-9041

www.everestbiotech.com

**Research Use Only. Not for
diagnostic or therapeutic use.**

EB05247 - Goat Anti-ATF4 Antibody

Size: 100µg specific antibody in 200µl



Target Protein

Principal Names: ATF4, activating transcription factor 4 (tax-responsive enhancer element B67), CREB2, TXREB, CREB-2, TAXREB67, OTTHUMP00000199130, activating transcription factor 4, cAMP response element-binding protein 2

Official Symbol: ATF4

Accession Number(s): NP_001666.2; NP_877962.1

Human GeneID(s): [468](#)

Non-Human GeneID(s): 11911 (mouse), 79255 (rat)

Important Comments: This antibody is expected to recognize both reported isoforms (NP_001666.2; NP_877962.1).

Immunogen

Peptide with sequence C-EEVRKARGKKRVP, from the C Terminus of the protein sequence according to NP_001666.2; NP_877962.1.

Please note the [peptide](#) is available for sale.

Purification and Storage

Purified from goat serum by ammonium sulphate precipitation followed by antigen affinity chromatography using the immunizing peptide.

Supplied at 0.5 mg/ml in Tris saline, 0.02% sodium azide, pH7.3 with 0.5% bovine serum albumin.

Aliquot and store at -20°C. Minimize freezing and thawing.

Applications Tested

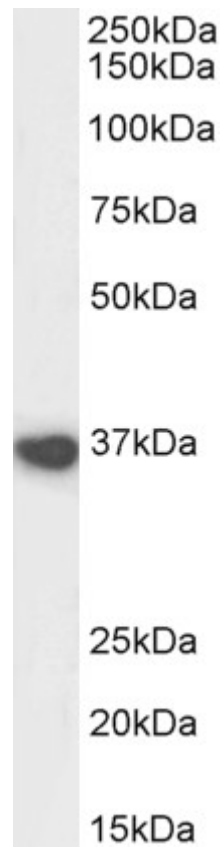
Peptide ELISA: antibody detection limit dilution 1:128000.

Western blot: Approx 35-37kDa band observed in Mouse Heart lysates (calculated MW of 38.3kDa according to Mouse NP_001274109.1; NP_033846.2). Recommended concentration: 0.3-1µg/ml. Primary incubation 1 hour at room temperature.

Species Reactivity

Tested: Mouse

Expected from sequence similarity: Human, Mouse, Rat, Pig



EB05247 (1µg/ml) staining of Mouse Heart lysate (35µg protein in RIPA buffer). Detected by chemiluminescence.