



Everest Biotech Ltd
Cherwell Innovation Centre
77 Heyford Park
Upper Heyford
Oxfordshire
OX25 5HD, United Kingdom

everestbiotech.com

sales@everestbiotech.com

support@everestbiotech.com

Tel +44 1869 238326

Fax +44 1869 238327

Research Use Only. Not for diagnostic or therapeutic use.

Storage: For long-term storage keep aliquots at -20°C. (Store no longer than 12 months at 4°C). Minimize freezing and thawing.

EB05244 - Goat Anti-ATF7 Antibody

Size: 100µg specific antibody in 200µl



Target Protein

Principal Names: MGC57182, activating transcription factor 7, ATFA, ATF7

Official Symbol: ATF7

Accession Number(s): NP_001123531.1; NP_006847.1; NP_001123532.1

Human GeneID(s): [11016](#)

Important Comments: This antibody is expected to recognise all three reported isoforms (NP_001123531.1, NP_006847.1 and NP_001123532.1).

Immunogen

Peptide with sequence C-HVIMTPQSQSAGR, from the C Terminus of the protein sequence according to NP_001123531.1; NP_006847.1; NP_001123532.1.

Please note the [peptide](#) is available for sale.

Purification and Storage

Purified from goat serum by ammonium sulphate precipitation followed by antigen affinity chromatography using the immunizing peptide.

Supplied at 0.5 mg/ml in Tris saline, 0.02% sodium azide, pH7.3 with 0.5% bovine serum albumin.

Aliquot and store at -20°C. Minimize freezing and thawing.

Applications Tested

Peptide ELISA: antibody detection limit dilution 1:16000.

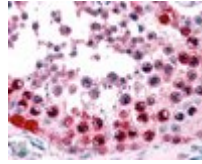
Western blot: Approx 35kDa band seen in HeLa cell lysates. Recommended for use at 0.5-2µg/ml. Please note the band size is in agreement with previous experimental data (J Biol Chem 2001 Apr 27;276(17):13718-26).

IHC: In paraffin embedded Human Testis shows staining of select spermatocytes in Human Testis. Recommended concentration, 3-5µg/ml.

Species Reactivity

Tested: Human

Expected from sequence similarity: Human, Rat, Dog, Cow



EB05244 (3.8 μ g/ml) staining of paraffin embedded Human Testis. Steamed antigen retrieval with citrate buffer pH 6, AP-staining.



EB05244 staining (0.5 μ g/ml) of HeLa lysate (RIPA buffer, 35 μ g total protein per lane). Primary incubated for 1 hour. Detected by western blot using chemiluminescence.