



## UK Office

### Everest Biotech Ltd

Cherwell Innovation Centre  
77 Heyford Park  
Upper Heyford  
Oxfordshire  
OX25 5HD  
UK

Enquiries:

[info@everestbiotech.com](mailto:info@everestbiotech.com)

Sales:

[sales@everestbiotech.com](mailto:sales@everestbiotech.com)

Tech support:

[support@everestbiotech.com](mailto:support@everestbiotech.com)

Tel: +44 (0)1869 238326

Fax: +44 (0)1869 238327

## US Office

### Everest Biotech c/o Abcore

405 Maple Street, Suite A106  
Ramona,  
CA 92065  
USA

Inquiries:

[info@everestbiotech.com](mailto:info@everestbiotech.com)

Sales:

[usasales@everestbiotech.com](mailto:usasales@everestbiotech.com)

Tech support:

[support@everestbiotech.com](mailto:support@everestbiotech.com)

Tel: 888-320-4628 (toll-free)

Fax: 888-841-9041

[www.everestbiotech.com](http://www.everestbiotech.com)

**Research Use Only. Not for  
diagnostic or therapeutic use.**

## EB07671 - Goat Anti-ATGL / Desnutrin Antibody

Size: 100µg specific antibody in 200µl



### Target Protein

**Principal Names:** ATGL, DESNUTRIN, PNPLA2, patatin-like phospholipase domain containing 2, 1110001C14Rik, DKFZp667M109, FP17548, PEDF-R, TTS-2.2, TTS2, adipose triglyceride lipase, pigment epithelium-derived factor, transport-secretion protein 2.2, triglyceride hydrolase

**Official Symbol:** PNPLA2

**Accession Number(s):** NP\_065109.1

**Human GeneID(s):** [57104](#)

**Non-Human GeneID(s):** 66853 (mouse), 361676 (rat)

**Important Comments:** Please note this antibody was designed using the Mouse sequence NP\_080078.1, which differs by 2 amino acids from the Human sequence NP\_065109.1.

### Immunogen

Peptide with sequence C-NIIEVSKEARKR, from the internal region of the protein sequence according to NP\_065109.1.

Please note the [peptide](#) is available for sale.

### Purification and Storage

Purified from goat serum by ammonium sulphate precipitation followed by antigen affinity chromatography using the immunizing peptide.

Supplied at 0.5 mg/ml in Tris saline, 0.02% sodium azide, pH7.3 with 0.5% bovine serum albumin.

Aliquot and store at -20°C. Minimize freezing and thawing.

### Applications Tested

**Peptide ELISA:** antibody detection limit dilution 1:32000.

**Western blot:** Approx 60kDa band observed in Human Adipose lysates (calculated MW of 55.3kDa according to NP\_065109.1). Recommended concentration: 0.5-2µg/ml.

Primary incubation was 1 hour. Preliminary testing was unsuccessful on Rat Testis for this particular batch.

**IHC:** In paraffin embedded Human Heart shows intense staining of distinct spots in the myocardial fibres in transverse section. Recommended concentration: 2-3µg/ml.

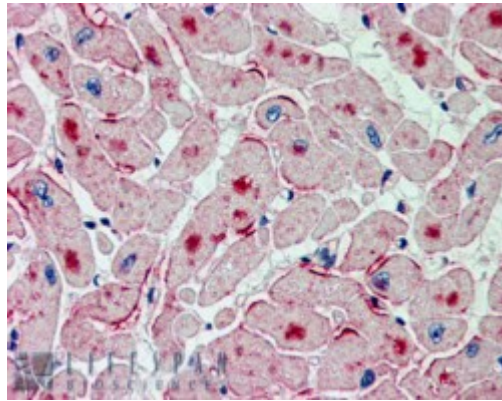
### Species Reactivity

**Tested:** Human

**Expected from sequence similarity:** Human, Mouse, Rat, Dog, Pig, Cow



EB07671 (0.5 $\mu$ g/ml) staining of Human Adipose lysate (35 $\mu$ g protein in RIPA buffer). Detected by chemiluminescence.



EB07671 (2.5 $\mu$ g/ml) staining of paraffin embedded Human Heart. Steamed antigen retrieval with citrate buffer pH 6, AP-staining.