



UK Office

Everest Biotech Ltd

Cherwell Innovation Centre
77 Heyford Park
Upper Heyford
Oxfordshire
OX25 5HD
UK

Enquiries:

info@everestbiotech.com

Sales:

sales@everestbiotech.com

Tech support:

support@everestbiotech.com

Tel: +44 (0)1869 238326

www.everestbiotech.com

**Research Use Only. Not for
diagnostic or therapeutic use.**

EB08261 - Goat Anti-ATP13A1 Antibody

Size: 100µg specific antibody in 200µl



Target Protein

Principal Names: ATP13A1, ATPase type 13A1, ATP13A, CGI-152, DKFZp761L1623, FLJ31858, FLJ41786, FLJ43873, FLJ90317, KIAA1825, cation transporting ATPase, cation-transporting ATPase

Official Symbol: ATP13A1

Accession Number(s): NP_065143.2

Human GeneID(s): [57130](#)

Non-Human GeneID(s): 170759 (mouse), 290673 (rat)

Immunogen

Peptide with sequence C-REAQARSPEKQEQ, from the internal region of the protein sequence according to NP_065143.2.

Please note the [peptide](#) is available for sale.

Purification and Storage

Purified from goat serum by ammonium sulphate precipitation followed by antigen affinity chromatography using the immunizing peptide.

Supplied at 0.5 mg/ml in Tris saline, 0.02% sodium azide, pH7.3 with 0.5% bovine serum albumin.

Aliquot and store at -20°C. Minimize freezing and thawing.

Applications Tested

Peptide ELISA: antibody detection limit dilution 1:64000.

Western blot: Approx 110kDa band observed in Human Kidney lysates (calculated MW of 133kDa according to NP_065143.2). Recommended concentration: 0.3-1µg/ml.

IHC: Paraffin embedded Human Thyroid. Recommended concentration: 5µg/ml.

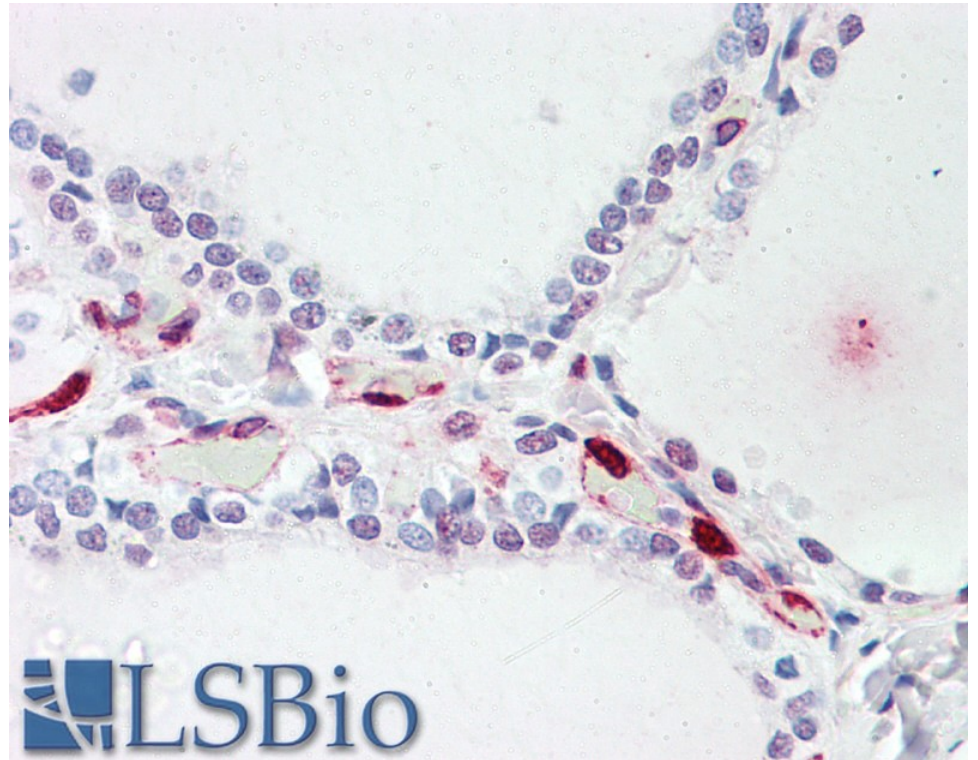
Species Reactivity

Tested: Human

Expected from sequence similarity: Human, Mouse, Rat, Dog



EB08261 (0.3 μ g/ml) staining of Human Kidney lysate (35 μ g protein in RIPA buffer). Primary incubation was 1 hour. Detected by chemiluminescence.



EB08261 (5 μ g/ml) staining of paraffin embedded Human Thyroid. Steamed antigen retrieval with citrate buffer pH 6, AP-staining.