

## UK Office

### Everest Biotech Ltd

Cherwell Innovation Centre  
77 Heyford Park  
Upper Heyford  
Oxfordshire  
OX25 5HD  
UK

Enquiries:

[info@everestbiotech.com](mailto:info@everestbiotech.com)

Sales:

[sales@everestbiotech.com](mailto:sales@everestbiotech.com)

Tech support:

[support@everestbiotech.com](mailto:support@everestbiotech.com)

Tel: +44 (0)1869 238326

[www.everestbiotech.com](http://www.everestbiotech.com)

**Research Use Only. Not for  
diagnostic or therapeutic use.**

## EB09640 - Goat Anti-ATP1B1 Antibody

Size: 100µg specific antibody in 200µl



### Target Protein

**Principal Names:** ATP1B1, ATPase, Na<sup>+</sup>/K<sup>+</sup> transporting, beta 1 polypeptide, ATP1B, MGC1798, Beta 1-subunit of Na(+),K(+)-ATPase, Na<sup>+</sup>/K<sup>+</sup> -ATPase beta 1 subunit, Na, K-ATPase beta-1 polypeptide, Na,K-ATPase beta 1 subunit, OTTHUMP00000032537, OTTHUMP00000032538, adenosinetriphosphatase, sodium/potassium-dependent ATPase beta-1 subunit, sodium/potassium-transporting ATPase beta-1 chain

**Official Symbol:** ATP1B1

**Accession Number(s):** NP\_001668.1; NP\_001001787.1

**Human GeneID(s):** [481](#)

**Important Comments:** This antibody is expected to recognize both reported isoforms (NP\_001668.1; NP\_001001787.1).

### Immunogen

Peptide with sequence C-KTEISFRPNPKSYE, from the internal region of the protein sequence according to NP\_001668.1; NP\_001001787.1.

Please note the [peptide](#) is available for sale.

### Purification and Storage

Purified from goat serum by ammonium sulphate precipitation followed by antigen affinity chromatography using the immunizing peptide.

Supplied at 0.5 mg/ml in Tris saline, 0.02% sodium azide, pH7.3 with 0.5% bovine serum albumin.

Aliquot and store at -20°C. Minimize freezing and thawing.

### Applications Tested

**Peptide ELISA:** antibody detection limit dilution 1:128000.

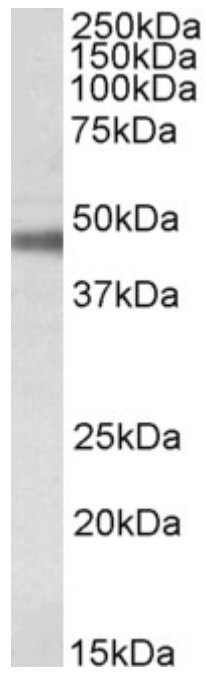
**Western blot:** Approx 48kDa band observed in Rat Retina lysates and 50kDa in Mouse and Rat Kidney lysates (calculated MW of 35.1kDa according to Human NP\_001668.1, 35.2kDa according to Mouse NP\_033851.1 and Rat NP\_037245.2). The observed molecular weight corresponds to the glycosylated form (PMID: 20130120). Recommended concentration: 0.1-0.3µg/ml.

**IHC:** Paraffin embedded Human Small Intestine. Recommended concentration: 5µg/ml.

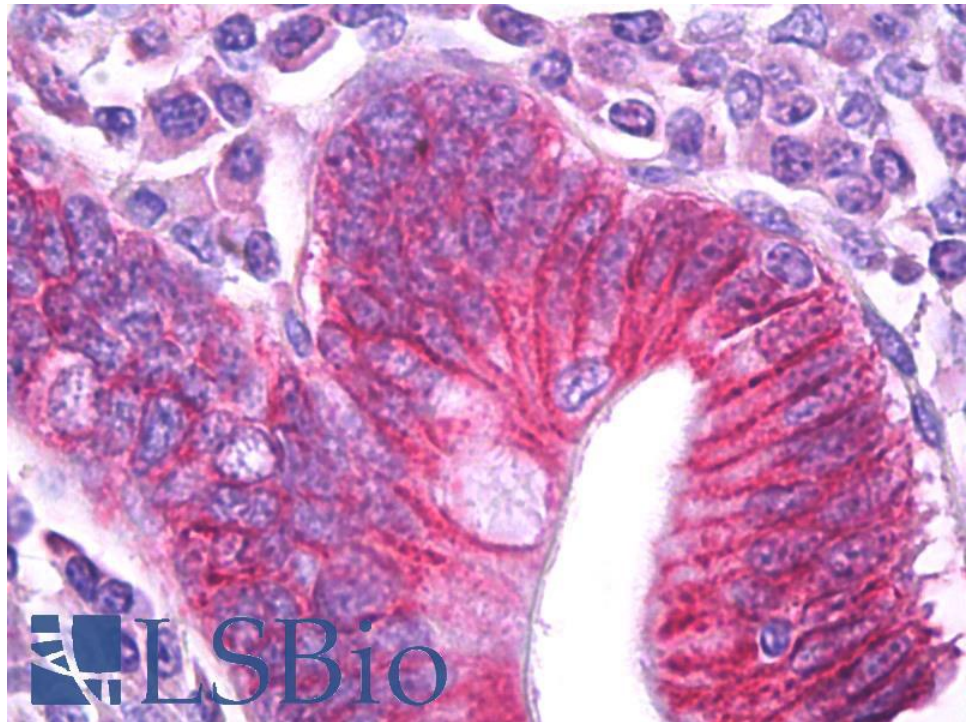
### Species Reactivity

**Tested:** Human, Mouse, Rat

**Expected from sequence similarity:** Human, Mouse, Rat, Dog, Cow, Pig



EB09640 (0.1µg/ml) staining of Rat Retina lysate (35µg protein in RIPA buffer). Primary incubation was 1 hour.  
Detected by chemiluminescence.



EB09640 (5µg/ml) staining of paraffin embedded Human Small Intestine. Steamed antigen retrieval with citrate buffer pH 6, AP-staining.