



UK Office

Everest Biotech Ltd

Cherwell Innovation Centre
77 Heyford Park
Upper Heyford
Oxfordshire
OX25 5HD
UK

Enquiries:

info@everestbiotech.com

Sales:

sales@everestbiotech.com

Tech support:

support@everestbiotech.com

Tel: +44 (0)1869 238326

www.everestbiotech.com

**Research Use Only. Not for
diagnostic or therapeutic use.**

EB11182 - Goat Anti-ATP2B1 (aa312-327) Antibody

Size: 100µg specific antibody in 200µl

Target Protein

Principal Names: ATPase, Ca⁺⁺ transporting, plasma membrane 1, plasma membrane calcium ATPase, plasma membrane calcium pump, plasma membrane calcium-ATPase, plasma membrane calcium-transporting ATPase 1, PMCA1, PMCA1kb, ATP2B1

Official Symbol: ATP2B1

Accession Number(s): NP_001001323.1; NP_001673.2

Human GeneID(s): [490](#)

Non-Human GeneID(s): 67972 (mouse), 29598 (rat)

Important Comments: This antibody is expected to recognize both reported isoforms (NP_001001323.1; NP_001673.2).

Immunogen

Peptide with sequence C-KQDGAENRNKAKAQD, from the internal region of the protein sequence according to NP_001001323.1; NP_001673.2.

Please note the [peptide](#) is available for sale.

Purification and Storage

Purified from goat serum by ammonium sulphate precipitation followed by antigen affinity chromatography using the immunizing peptide.

Supplied at 0.5 mg/ml in Tris saline, 0.02% sodium azide, pH7.3 with 0.5% bovine serum albumin.

Aliquot and store at -20°C. Minimize freezing and thawing.

Applications Tested

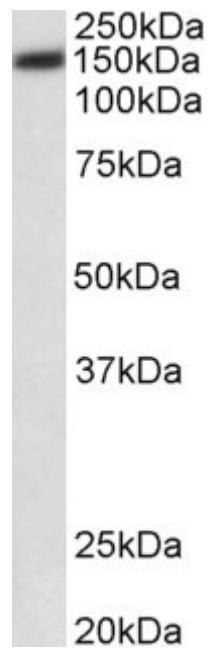
Peptide ELISA: antibody detection limit dilution 1:64000.

Western blot: Approx 150kDa band observed in lysates of cell line HeLa (calculated MW of 135kDa according to NP_001673.2). Recommended concentration: 0.03-0.1µg/ml.

Species Reactivity

Tested: Human

Expected from sequence similarity: Human, Mouse, Rat, Dog, Pig, Cow



EB11182 (0.03 μ g/ml) staining of HeLa lysate (35 μ g protein in RIPA buffer). Primary incubation was 1 hour.
Detected by chemiluminescence.