

UK Office

Everest Biotech Ltd

Cherwell Innovation Centre
77 Heyford Park
Upper Heyford
Oxfordshire
OX25 5HD
UK

Enquiries:

info@everestbiotech.com

Sales:

sales@everestbiotech.com

Tech support:

support@everestbiotech.com

Tel: +44 (0)1869 238326

www.everestbiotech.com

**Research Use Only. Not for
diagnostic or therapeutic use.**

EB12389 - Goat Anti-ATP5A1 Antibody

Size: 100µg specific antibody in 200µl



Target Protein

Principal Names: ATP5A1, ATP synthase, H⁺ transporting, mitochondrial F1 complex, alpha subunit 1, cardiac muscle, ATP5A, ATP5AL2, ATPM, MOM2, OMR, ORM, hATP1, ATP synthase alpha chain, mitochondrial, ATP synthase subunit alpha, mitochondrial, ATP synthase, H⁺ transportin

Official Symbol: ATP5F1A

Accession Number(s): NP_004037.1; NP_001244263.1; NP_001001935.1

Human GeneID(s): [498](#)

Non-Human GeneID(s): 11946 (mouse), 65262 (rat)

Important Comments: This antibody is expected to recognize all reported isoforms (NP_004037.1; NP_001244263.1; NP_001001935.1). Reported variants represent identical protein: NP_001244264.1, NP_001001935.1. Reported variants represent identical protein: NP_004037.1, NP_001001937.1.

Immunogen

Peptide with sequence C-RVHGLRNVQAE, from the internal region (near N terminus) of the protein sequence according to NP_004037.1; NP_001244263.1; NP_001001935.1.

Please note the [peptide](#) is available for sale.

Purification and Storage

Purified from goat serum by ammonium sulphate precipitation followed by antigen affinity chromatography using the immunizing peptide.

Supplied at 0.5 mg/ml in Tris saline, 0.02% sodium azide, pH7.3 with 0.5% bovine serum albumin.

Aliquot and store at -20°C. Minimize freezing and thawing.

Applications Tested

Peptide ELISA: antibody detection limit dilution 1:128000.

Western blot: Approx 55kDa band observed in Human, Mouse, Rat and Pig Heart lysates (calculated MW of 54.5kDa according to NP_001001935.1). Recommended concentration: 0.01-0.03µg/ml.

Additional validation: This antibody has been successfully used in the following paper: Sikorski et al. (2018) PMID: 30377371.

Species Reactivity

Tested: Human, Mouse, Rat, Pig

Expected from sequence similarity: Human, Mouse, Rat, Dog, Pig, Cow

Specific Reference

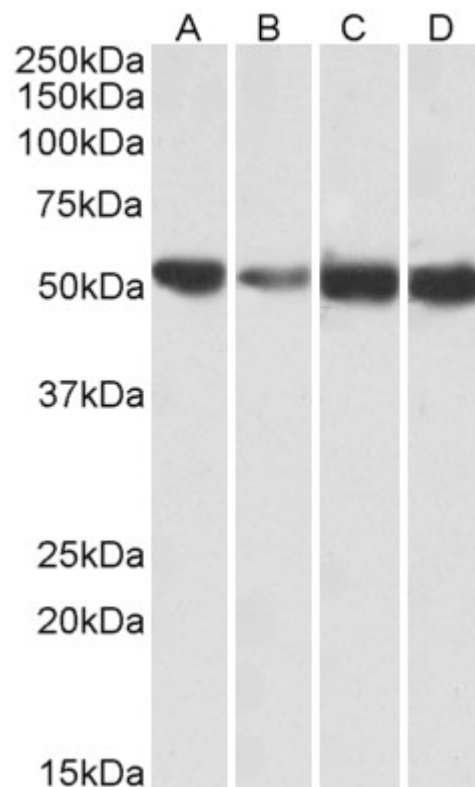
This antibody has been successfully used in the following paper:

Krzysztof Sikorski, Adi Mehta, Marit Inngjerdengen, Flourina Thakor, Simon Kling, Tomas Kalina, Tuula A. Nyman, Maria Ekman Stensland, Wei Zhou, Gustavo A. De Souza, Lars Holden, Jan Stuchly, Markus Templin and Fridtjof Lund-Johansen

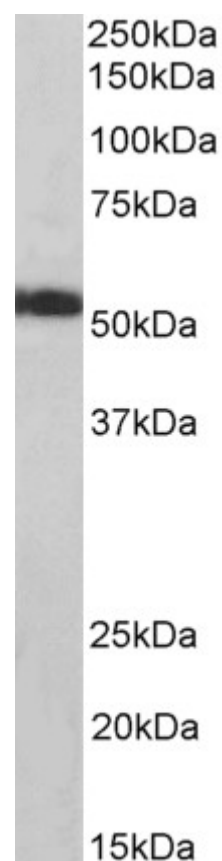
A high-throughput pipeline for validation of antibodies

Nat Methods. 2018 Nov;15(11):909-912

PMID: 30377371



EB12389 (0.01 μ g/ml) staining of Human (A), fetal Mouse (B), adult Mouse (C) and adult Rat (D) Heart lysates (35 μ g protein in RIPA buffer). Primary incubation was 1 hour. Detected by chemiluminescence.



EB12389 (0.01 μ g/ml) staining of Pig Heart lysates (35 μ g protein in RIPA buffer). Primary incubation was 1 hour. Detected by chemiluminescence.