

UK Office

Everest Biotech Ltd

Cherwell Innovation Centre
77 Heyford Park
Upper Heyford
Oxfordshire
OX25 5HD
UK

Enquiries:

info@everestbiotech.com

Sales:

sales@everestbiotech.com

Tech support:

support@everestbiotech.com

Tel: +44 (0)1869 238326

www.everestbiotech.com

**Research Use Only. Not for
diagnostic or therapeutic use.**

EB12464 - Goat Anti-ATP5F1 (aa142-153) Antibody

Size: 100µg specific antibody in 200µl

Target Protein

Principal Names: ATP5F1, ATP synthase, H⁺ transporting, mitochondrial Fo complex, subunit B1, PIG47, ATP synthase B chain, mitochondrial, ATP synthase subunit b, mitochondrial, ATP synthase, H⁺ transporting, mitochondrial F0 complex, subunit B1, ATP synthase, H⁺ transport

Official Symbol: ATP5F1

Accession Number(s): NP_001679.2

Human GeneID(s): [515](#)

Immunogen

Peptide with sequence C-SIQHIQNAIDTE, from the internal region of the protein sequence according to NP_001679.2.

Please note the [peptide](#) is available for sale.

Purification and Storage

Purified from goat serum by ammonium sulphate precipitation followed by antigen affinity chromatography using the immunizing peptide.

Supplied at 0.5 mg/ml in Tris saline, 0.02% sodium azide, pH7.3 with 0.5% bovine serum albumin.

Aliquot and store at -20°C. Minimize freezing and thawing.

Applications Tested

Peptide ELISA: antibody detection limit dilution 1:128000.

Western blot: Approx 25kDa band observed in Human Heart lysates (calculated MW of 28.9kDa according to NP_001679.2). This molecular weight is routinely observed by other sources. Recommended concentration: 0.03-0.1µg/ml. Primary incubation was 1 hour.

IHC: Paraffin embedded Human Heart. Recommended concentration: 5µg/ml.

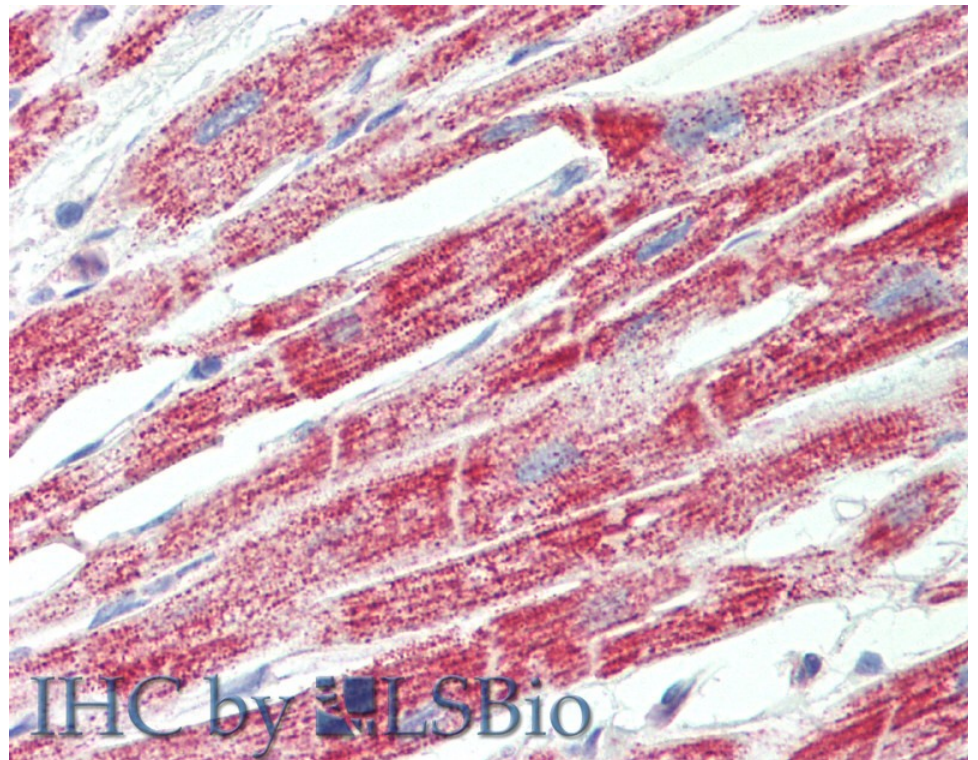
Species Reactivity

Tested: Human

Expected from sequence similarity: Human



EB12464 (0.03 μ g/ml) staining of Human Heart lysate (35 μ g protein in RIPA buffer). Detected by chemiluminescence.



EB12464 (5 μ g/ml) staining of paraffin embedded Human Heart. Steamed antigen retrieval with citrate buffer pH 6, AP-staining.