



Everest Biotech Ltd
Cherwell Innovation Centre
77 Heyford Park
Upper Heyford
Oxfordshire
OX25 5HD, United Kingdom

everestbiotech.com

sales@everestbiotech.com

support@everestbiotech.com

Tel +44 1869 238326

Fax +44 1869 238327

Research Use Only. Not for diagnostic or therapeutic use.

Storage: For long-term storage keep aliquots at -20°C. (Store no longer than 12 months at 4°C). Minimize freezing and thawing.

EB08786 - Goat Anti-AVPR1B (mouse) Antibody

Size: 100µg specific antibody in 200µl



Target Protein

Principal Names: VPR3, V3/V1b pituitary vasopressin receptor, AVPR3, V3/V1b, VIBR, VPR, vasopressin V1B receptor, pituitary vasopressin receptor 3, arginine vasopressin receptor 3, antidiuretic hormone receptor 1B, AVPR3, arginine vasopressin receptor 1B, AAavr1b

Official Symbol: AVPR1B

Accession Number(s): NP_036054.1

Non-Human GeneID(s): 26361 (mouse), 29462 (rat)

Immunogen

Peptide with sequence C-KPAGSLKDLEQVD, from the internal region (near C Terminus) of the protein sequence according to NP_036054.1.

Please note the [peptide](#) is available for sale.

Purification and Storage

Purified from goat serum by ammonium sulphate precipitation followed by antigen affinity chromatography using the immunizing peptide.

Supplied at 0.5 mg/ml in Tris saline, 0.02% sodium azide, pH7.3 with 0.5% bovine serum albumin.

Aliquot and store at -20°C. Minimize freezing and thawing.

Applications Tested

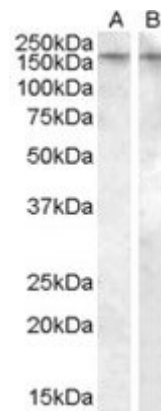
Peptide ELISA: antibody detection limit dilution 1:32000.

Western blot: Approx. 170kDa band observed in Rat Brain lysates (calculated MW of 46.5kDa according to NP_036054.1). The observed molecular weight corresponds to findings with EB08785, a product of different design reacting to the C-terminus of the Human protein. Recommended concentration: 0.05-0.2µg/ml.

Species Reactivity

Tested: Rat

Expected from sequence similarity: Mouse, Rat



EB08785 (0.5 μ g/ml) staining of Human Amygdala lysate (35 μ g protein in RIPA buffer) in lane A and EB08786 (0.05 μ g/ml) staining of Rat Brain lysate (35 μ g protein in RIPA buffer) in lane B . Primary incubation was 1 hour. Detected by chemiluminescence.