



UK Office

Everest Biotech Ltd

Cherwell Innovation Centre
77 Heyford Park
Upper Heyford
Oxfordshire
OX25 5HD
UK

Enquiries:

info@everestbiotech.com

Sales:

sales@everestbiotech.com

Tech support:

support@everestbiotech.com

Tel: +44 (0)1869 238326

Fax: +44 (0)1869 238327

US Office

Everest Biotech c/o Abcore

405 Maple Street, Suite A106
Ramona,
CA 92065
USA

Inquiries:

info@everestbiotech.com

Sales:

usasales@everestbiotech.com

Tech support:

support@everestbiotech.com

Tel: 888-320-4628 (toll-free)

Fax: 888-841-9041

www.everestbiotech.com

**Research Use Only. Not for
diagnostic or therapeutic use.**

EB07942 - Goat Anti-B7-H4 Antibody

Size: 100µg specific antibody in 200µl



Target Protein

Principal Names: B7-H4, B7H4, B7S1, B7X, B7h.5, FLJ22418, PRO1291, RP11-229A19.4, VCTN1, T cell costimulatory molecule B7x, immune costimulatory protein, V-set domain containing T cell activation inhibitor 1

Official Symbol: VTCN1

Accession Number(s): NP_078902.2; NP_001240778.1

Human GeneID(s): [79679](#)

Non-Human GeneID(s): 242122 (mouse), 295322 (rat)

Immunogen

Peptide with sequence C-SKGKGNANLEYK, from the internal region of the protein sequence according to NP_078902.2; NP_001240778.1.

Please note the [peptide](#) is available for sale.

Purification and Storage

Purified from goat serum by ammonium sulphate precipitation followed by antigen affinity chromatography using the immunizing peptide.

Supplied at 0.5 mg/ml in Tris saline, 0.02% sodium azide, pH7.3 with 0.5% bovine serum albumin.

Aliquot and store at -20°C. Minimize freezing and thawing.

Applications Tested

Peptide ELISA: antibody detection limit dilution 1:64000.

Western blot: Approx 26+21kDa bands observed in HEK293 cell lysates, which were both successfully blocked by incubation with the immunizing peptide. An approx 26kDa and 21kDa band observed in Human Adrenal Gland lysates, and approx 27kDa in Human Pancreas lysates (calculated MW of 30.9kDa according to NP_078902.2 isoform 1 and 20.7kDa according to NP_001240778.1 isoform 2). Recommended concentration: 0.1-1µg/ml. Primary incubation 1 hour at room temperature.

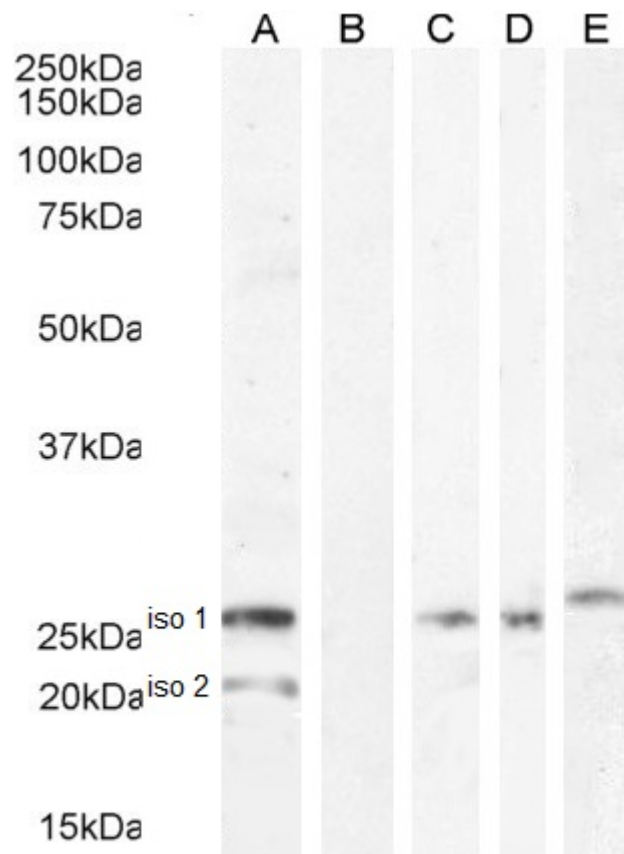
Immunofluorescence: Strong expression of the protein seen in the cytoplasm and membranes/cell junctions of MCF7 cells. Recommended concentration: 10µg/ml.

Flow Cytometry: Flow cytometric analysis of MCF7 cells. Recommended concentration: 10ug/ml.

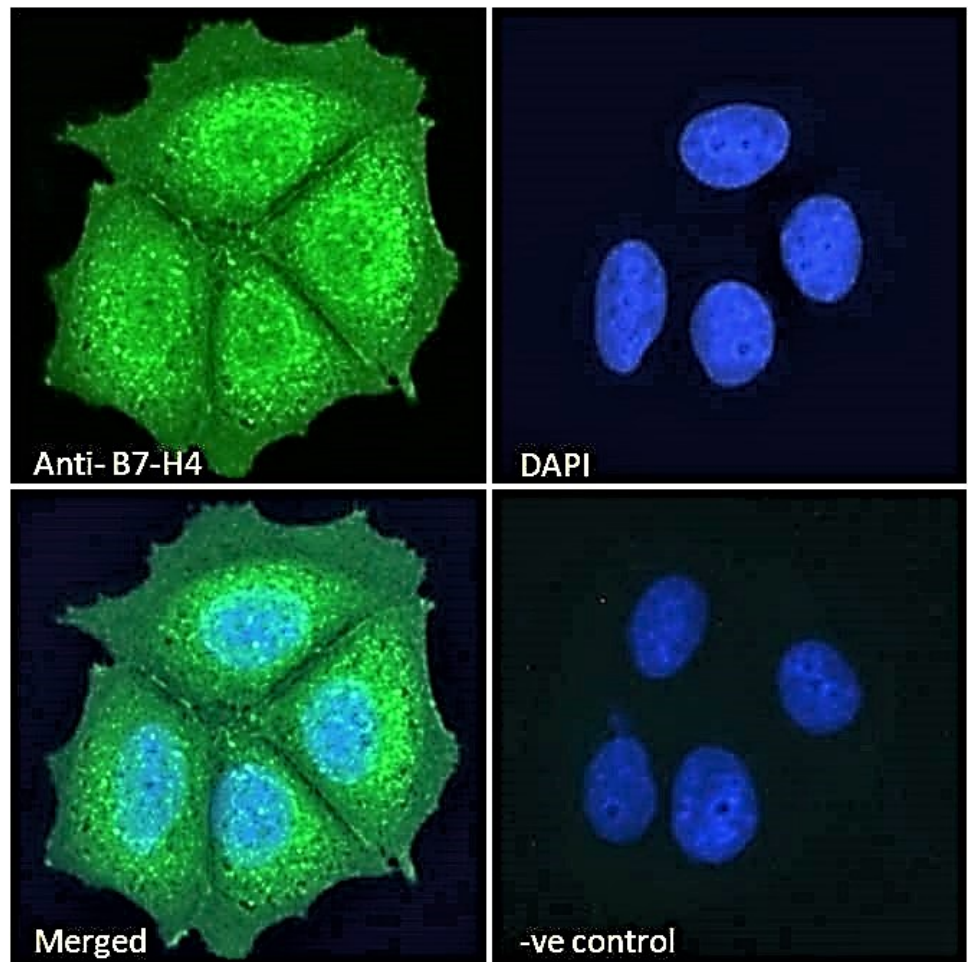
Species Reactivity

Tested: Human

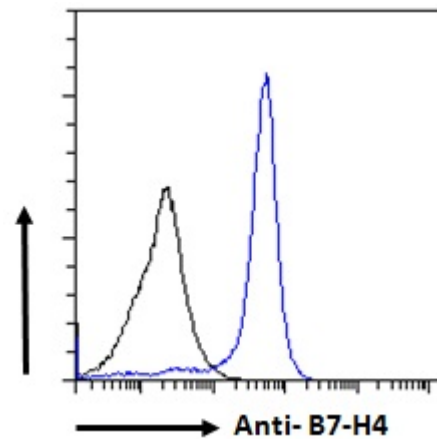
Expected from sequence similarity: Human, Mouse, Rat, Dog



EB07942 (1ug/ml) staining of HEK293 iso 1 + iso 2 cell lysate (A) + peptide (B). Human Adrenal Gland iso 1 (C), Human Adrenal Gland iso 2 (D) and (0.1µg/ml) Human pancreas iso 1 (E) lysate (35µg protein in RIPA buffer). Detected by chemiluminescence.



EB07942 Immunofluorescence analysis of paraformaldehyde fixed MCF7 cells, permeabilized with 0.15% Triton. Primary incubation 1hr (10ug/ml) followed by Alexa Fluor 488 secondary antibody (2ug/ml), showing membrane/cell junction and cytoplasmic staining. The nuclear stain is DAPI (blue). Negative control: Unimmunized goat IgG (10ug/ml) followed by Alexa Fluor 488 secondary antibody (2ug/ml).



EB07942 Flow cytometric analysis of paraformaldehyde fixed MCF7 cells (blue line), permeabilized with 0.5% Triton. Primary incubation 1hr (10ug/ml) followed by Alexa Fluor 488 secondary antibody (1ug/ml). IgG control: Unimmunized goat IgG (black line) followed by Alexa Fluor 488 secondary antibody.