



## UK Office

### Everest Biotech Ltd

Cherwell Innovation Centre  
77 Heyford Park  
Upper Heyford  
Oxfordshire  
OX25 5HD  
UK

Enquiries:

[info@everestbiotech.com](mailto:info@everestbiotech.com)

Sales:

[sales@everestbiotech.com](mailto:sales@everestbiotech.com)

Tech support:

[support@everestbiotech.com](mailto:support@everestbiotech.com)

Tel: +44 (0)1869 238326

[www.everestbiotech.com](http://www.everestbiotech.com)

**Research Use Only. Not for  
diagnostic or therapeutic use.**

## EB12081 - Goat Anti-BACH1 (aa250-263) Antibody

Size: 100µg specific antibody in 200µl



### Target Protein

**Principal Names:** BACH1, BTB and CNC homology 1, basic leucine zipper transcription factor 1, BACH-1, BTB and CNC homolog 1, HA2303, basic region leucine zipper transcriptional regulator BACH1, transcription regulator protein BACH1

**Official Symbol:** BACH1

**Accession Number(s):** NP\_001177.1

**Human GeneID(s):** [571](#)

**Important Comments:** Reported variants represent identical protein: NP\_996749.1, NP\_001177.1

### Immunogen

Peptide with sequence HASVQPNERSENEC, from the internal region of the protein sequence according to NP\_001177.1.

Please note the [peptide](#) is available for sale.

### Purification and Storage

Purified from goat serum by ammonium sulphate precipitation followed by antigen affinity chromatography using the immunizing peptide.

Supplied at 0.5 mg/ml in Tris saline, 0.02% sodium azide, pH7.3 with 0.5% bovine serum albumin.

Aliquot and store at -20°C. Minimize freezing and thawing.

### Applications Tested

**Peptide ELISA:** antibody detection limit dilution 1:128000.

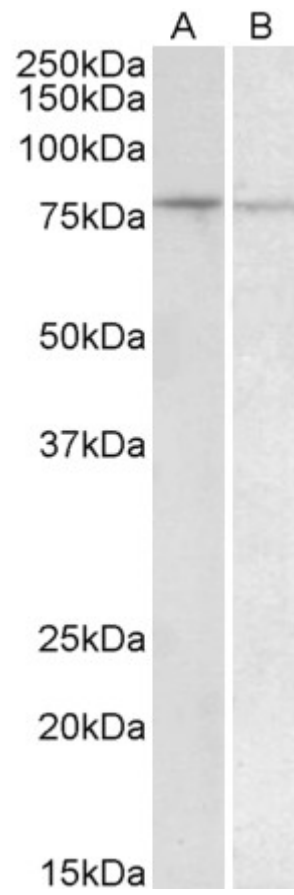
**Western blot:** Approx 80kDa band observed in Human Spleen and Peripheral Blood Lymphocytes lysates (calculated MW of 82.0kDa according to NP\_001177.1).

Recommended concentration: 1-3µg/ml.

### Species Reactivity

**Tested:** Human

**Expected from sequence similarity:** Human



EB12081 (1 $\mu$ g/ml) staining of Human Peripheral Blood Lymphocytes (A) and Human Spleen (B) lysate (35 $\mu$ g protein in RIPA buffer). Primary incubation was 1 hour. Detected by chemiluminescence.