



UK Office

Everest Biotech Ltd

Cherwell Innovation Centre
77 Heyford Park
Upper Heyford
Oxfordshire
OX25 5HD
UK

Enquiries:

info@everestbiotech.com

Sales:

sales@everestbiotech.com

Tech support:

support@everestbiotech.com

Tel: +44 (0)1869 238326

Fax: +44 (0)1869 238327

US Office

Everest Biotech c/o Abcore

405 Maple Street, Suite A106
Ramona,
CA 92065
USA

Inquiries:

info@everestbiotech.com

Sales:

usasales@everestbiotech.com

Tech support:

support@everestbiotech.com

Tel: 888-320-4628 (toll-free)

Fax: 888-841-9041

www.everestbiotech.com

**Research Use Only. Not for
diagnostic or therapeutic use.**

EB12081 - Goat Anti-BACH1 (aa250-263) Antibody

Size: 100µg specific antibody in 200µl



Target Protein

Principal Names: BACH1, BTB and CNC homology 1, basic leucine zipper transcription factor 1, BACH-1, BTB and CNC homolog 1, HA2303, basic region leucine zipper transcriptional regulator BACH1, transcription regulator protein BACH1

Official Symbol: BACH1

Accession Number(s): NP_001177.1

Human GeneID(s): [571](#)

Important Comments: Reported variants represent identical protein: NP_996749.1, NP_001177.1

Immunogen

Peptide with sequence HASVQPNERSENEC, from the internal region of the protein sequence according to NP_001177.1.

Please note the [peptide](#) is available for sale.

Purification and Storage

Purified from goat serum by ammonium sulphate precipitation followed by antigen affinity chromatography using the immunizing peptide.

Supplied at 0.5 mg/ml in Tris saline, 0.02% sodium azide, pH7.3 with 0.5% bovine serum albumin.

Aliquot and store at -20°C. Minimize freezing and thawing.

Applications Tested

Peptide ELISA: antibody detection limit dilution 1:128000.

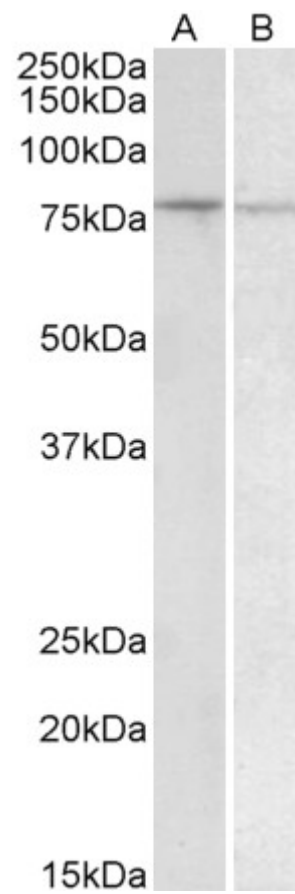
Western blot: Approx 80kDa band observed in Human Spleen and Peripheral Blood Lymphocytes lysates (calculated MW of 82.0kDa according to NP_001177.1).

Recommended concentration: 1-3µg/ml.

Species Reactivity

Tested: Human

Expected from sequence similarity: Human



EB12081 (1 μ g/ml) staining of Human Peripheral Blood Lymphocytes (A) and Human Spleen (B) lysate (35 μ g protein in RIPA buffer). Primary incubation was 1 hour. Detected by chemiluminescence.