



UK Office

Everest Biotech Ltd

Cherwell Innovation Centre
77 Heyford Park
Upper Heyford
Oxfordshire
OX25 5HD
UK

Enquiries:

info@everestbiotech.com

Sales:

sales@everestbiotech.com

Tech support:

support@everestbiotech.com

Tel: +44 (0)1869 238326

Fax: +44 (0)1869 238327

US Office

Everest Biotech c/o Abcore

405 Maple Street, Suite A106
Ramona,
CA 92065
USA

Inquiries:

info@everestbiotech.com

Sales:

usasales@everestbiotech.com

Tech support:

support@everestbiotech.com

Tel: 888-320-4628 (toll-free)

Fax: 888-841-9041

www.everestbiotech.com

**Research Use Only. Not for
diagnostic or therapeutic use.**

EB06054 - Goat Anti-BAF57 / SMARCE1 Antibody

Size: 100µg specific antibody in 200µl



Target Protein

Principal Names: SMARCE1, BAF57, SWI/SNF related, matrix associated, actin dependent regulator of chromatin, subfamily e, member 1, mammalian chromatin remodeling complex BRG1-associated factor 57, BAF57, SWI/SNF-related matrix-associated actin-dependent regulator of chromatin e1

Official Symbol: SMARCE1

Accession Number(s): NP_003070.3

Human GeneID(s): [6605](#)

Non-Human GeneID(s): 57376 (mouse)

Immunogen

Peptide with sequence C-PPTDPIPEDEKKE, from the C Terminus of the protein sequence according to NP_003070.3.

Please note the [peptide](#) is available for sale.

Purification and Storage

Purified from goat serum by ammonium sulphate precipitation followed by antigen affinity chromatography using the immunizing peptide.

Supplied at 0.5 mg/ml in Tris saline, 0.02% sodium azide, pH7.3 with 0.5% bovine serum albumin.

Aliquot and store at -20°C. Minimize freezing and thawing.

Applications Tested

Peptide ELISA: antibody detection limit dilution 1:16000.

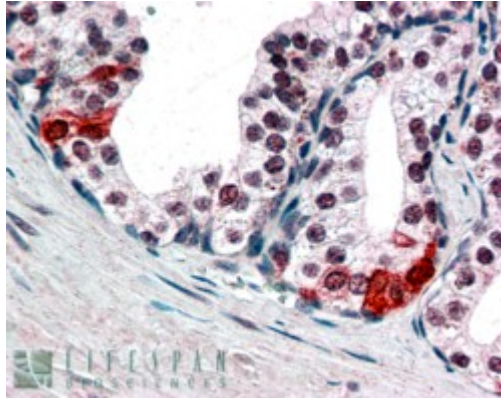
Western blot: Approx 50kDa band observed in lysates of cell lines HEPG2, HeLa and Jurkat (calculated MW of 46.6kDa according to NP_003070.3). A 48kDa band was observed in transfected HEK293 transiently expressing BAF57. This band is not observed in the non-transfected HEK293. Recommended concentration: 0.2-0.6 µg/ml. Full caption: A) HEK293 overexpressing BAF57 (RC209444) and probed with EB06054 (mock transfection in first lane), tested by Origene. B) EB06054 staining (0.2µg/ml) of Jurkat lysate (RIPA buffer, 35µg total protein per lane). Primary incubated for 1 hour. Detected by western blot using chemiluminescence.

IHC: In paraffin embedded Human Prostate shows nuclear staining in secretory epithelial cells. Recommended concentration, 3-5µg/ml.

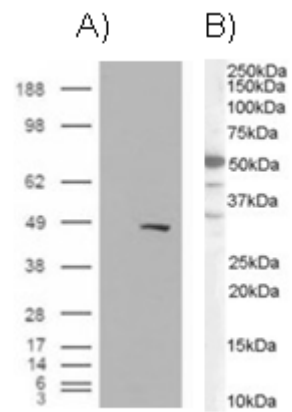
Species Reactivity

Tested: Human

Expected from sequence similarity: Human, Mouse



In paraffin embedded Human Prostate shows nuclear staining in secretory epithelial cells. Recommended concentration, 3-5µg/ml.



A) HEK293 overexpressing BAF57 (RC209444) and probed with EB06054 (mock transfection in first lane), tested by Origene. B) see Western Blot.