



UK Office

Everest Biotech Ltd

Cherwell Innovation Centre
77 Heyford Park
Upper Heyford
Oxfordshire
OX25 5HD
UK

Enquiries:

info@everestbiotech.com

Sales:

sales@everestbiotech.com

Tech support:

support@everestbiotech.com

Tel: +44 (0)1869 238326

Fax: +44 (0)1869 238327

US Office

Everest Biotech c/o Abcore

405 Maple Street, Suite A106
Ramona,
CA 92065
USA

Inquiries:

info@everestbiotech.com

Sales:

usasales@everestbiotech.com

Tech support:

support@everestbiotech.com

Tel: 888-320-4628 (toll-free)

Fax: 888-841-9041

www.everestbiotech.com

**Research Use Only. Not for
diagnostic or therapeutic use.**

EB06071 - Goat Anti-BAP / SIL1 Antibody

Size: 100µg specific antibody in 200µl



Target Protein

Principal Names: SIL1, BAP, endoplasmic reticulum chaperone SIL1, homolog of yeast, BiP-associated protein, SIL1 homolog, endoplasmic reticulum chaperone (*S. cerevisiae*), MSS, ULG5, SIL1 protein

Official Symbol: SIL1

Accession Number(s): NP_071909.1; NP_001032722.1

Human GeneID(s): [64374](#)

Important Comments: Variants (NP_071909.1; NP_001032722.1) encode the same isoform.

Immunogen

Peptide with sequence C-ELLGSVNSLLKELR, from the C Terminus of the protein sequence according to NP_071909.1; NP_001032722.1.

Please note the [peptide](#) is available for sale.

Purification and Storage

Purified from goat serum by ammonium sulphate precipitation followed by antigen affinity chromatography using the immunizing peptide.

Supplied at 0.5 mg/ml in Tris saline, 0.02% sodium azide, pH7.3 with 0.5% bovine serum albumin.

Aliquot and store at -20°C. Minimize freezing and thawing.

Applications Tested

Peptide ELISA: antibody detection limit dilution 1:8000.

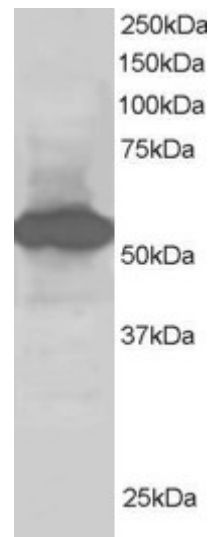
Western blot: Approx 55-60 kDa band observed in Human Liver and Kidney extracts (predicted MW of 53kDa according to NP_071909.1). Recommended concentration: 1-2µg/ml.

IHC: Paraffin embedded Human Liver and Testis. Recommended concentration: 5µg/ml.

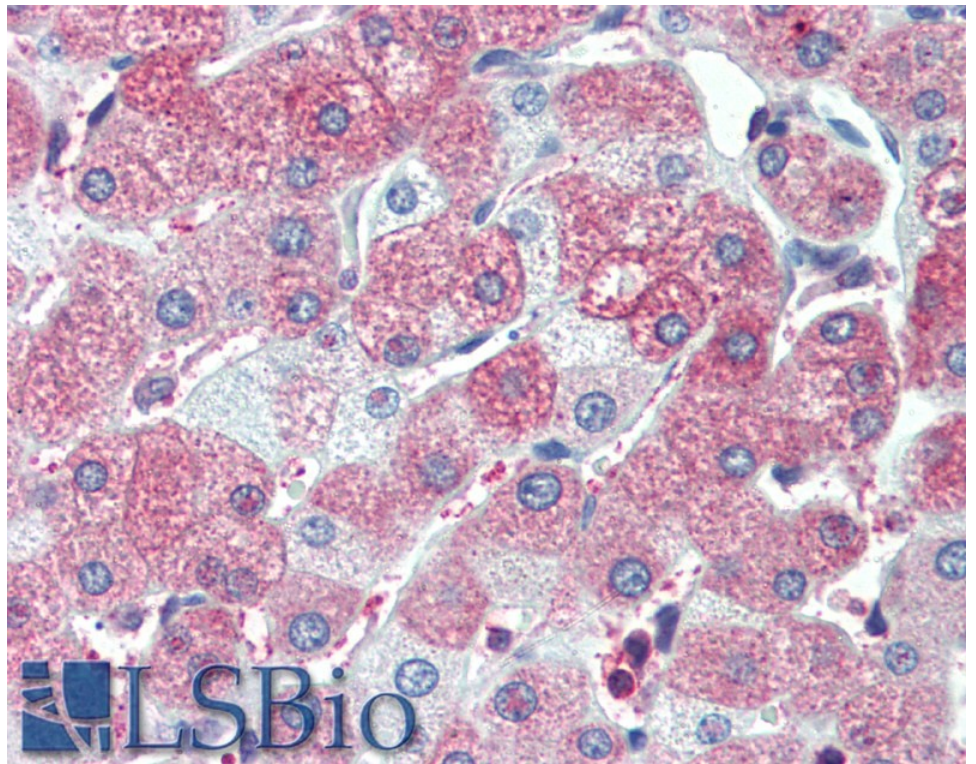
Species Reactivity

Tested: Human

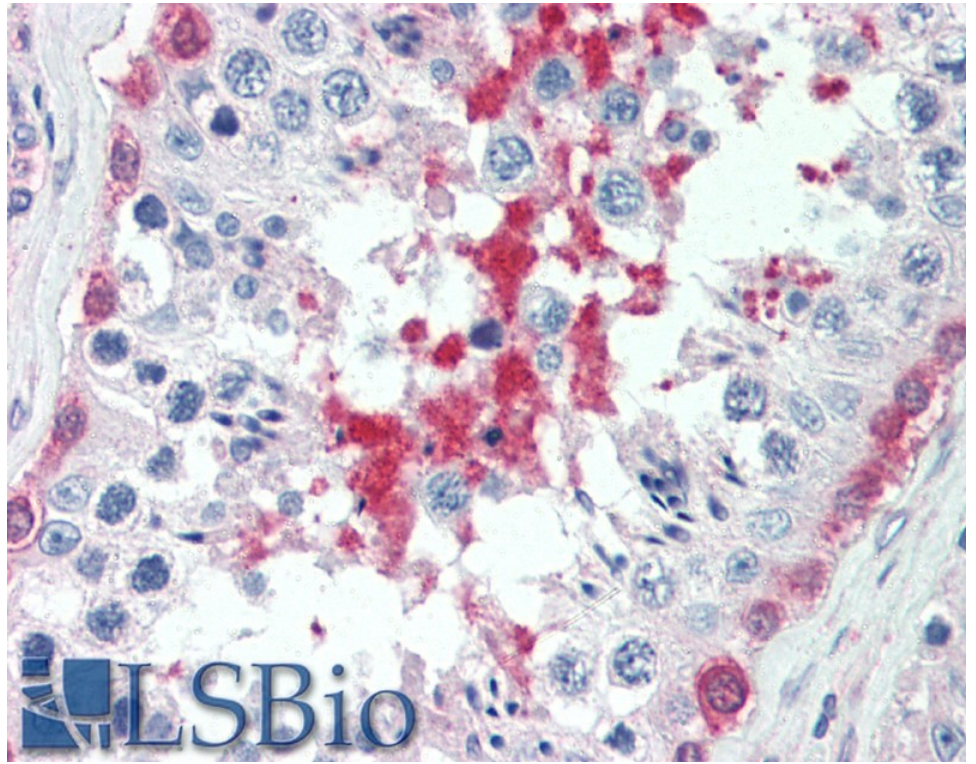
Expected from sequence similarity: Human



EB06071 staining (1µg/ml) of Human Kidney lysate (RIPA buffer, 30µg total protein per lane). Primary incubated for 1 hour. Detected by chemiluminescence.



EB06071 (5µg/ml) staining of paraffin embedded Human Liver. Steamed antigen retrieval with citrate buffer pH 6, AP-staining.



EB06071 (5µg/ml) staining of paraffin embedded Human Testis. Steamed antigen retrieval with citrate buffer pH 6, AP-staining.