



UK Office

Everest Biotech Ltd

Cherwell Innovation Centre
77 Heyford Park
Upper Heyford
Oxfordshire
OX25 5HD
UK

Enquiries:

info@everestbiotech.com

Sales:

sales@everestbiotech.com

Tech support:

support@everestbiotech.com

Tel: +44 (0)1869 238326

www.everestbiotech.com

**Research Use Only. Not for
diagnostic or therapeutic use.**

EB10389 - Goat Anti-BBC3 Antibody

Size: 100µg specific antibody in 200µl



Target Protein

Principal Names: BCL2 binding component 3, Bcl-2 binding component 3, JFY1, PUMA, BBC3

Official Symbol: BBC3

Accession Number(s): NP_001120712.1

Human GeneID(s): [27113](#)

Important Comments: This antibody is expected to recognize isoform 1 (NP_001120712.1) only.

Immunogen

Peptide with sequence C-DGGRPQRTVR, from the internal region of the protein sequence according to NP_001120712.1.

Please note the [peptide](#) is available for sale.

Purification and Storage

Purified from goat serum by ammonium sulphate precipitation followed by antigen affinity chromatography using the immunizing peptide.

Supplied at 0.5 mg/ml in Tris saline, 0.02% sodium azide, pH7.3 with 0.5% bovine serum albumin.

Aliquot and store at -20°C. Minimize freezing and thawing.

Applications Tested

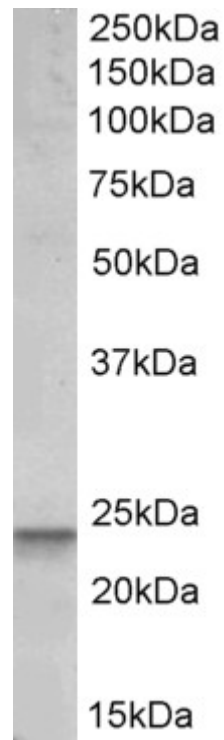
Peptide ELISA: antibody detection limit dilution 1:16000.

Western blot: Approx 24kDa band observed in Human peripheral blood mononucleocytes lysates (calculated MW of 26.5kDa according to NP_001120712.1). Recommended concentration: 0.1-0.3µg/ml.

Species Reactivity

Tested: Human

Expected from sequence similarity: Human



EB10389 (0.1 μ g/ml) staining of Peripheral Blood Lymphocytes lysate (35 μ g protein in RIPA buffer). Primary incubation was 1 hour. Detected by chemiluminescence.