

## UK Office

### Everest Biotech Ltd

Cherwell Innovation Centre  
77 Heyford Park  
Upper Heyford  
Oxfordshire  
OX25 5HD  
UK

Enquiries:

[info@everestbiotech.com](mailto:info@everestbiotech.com)

Sales:

[sales@everestbiotech.com](mailto:sales@everestbiotech.com)

Tech support:

[support@everestbiotech.com](mailto:support@everestbiotech.com)

Tel: +44 (0)1869 238326

[www.everestbiotech.com](http://www.everestbiotech.com)

**Research Use Only. Not for  
diagnostic or therapeutic use.**

## EB09989 - Goat Anti-BBS7 Antibody

Size: 100µg specific antibody in 200µl



### Target Protein

**Principal Names:** Bardet-Biedl syndrome 7, Bardet-Biedl syndrome 7 protein, BBS2L1, BBS2-like 1, FLJ10715, BBS7

**Official Symbol:** BBS7

**Accession Number(s):** NP\_789794.1; NP\_060660.2

**Human GeneID(s):** [55212](#)

**Non-Human GeneID(s):** 71492 (mouse), 361930 (rat)

**Important Comments:** This antibody is expected to recognize both isoforms (NP\_789794.1; NP\_060660.2).

### Immunogen

Peptide with sequence HCILEEADHLQE, from the internal region of the protein sequence according to NP\_789794.1; NP\_060660.2.

Please note the [peptide](#) is available for sale.

### Purification and Storage

Purified from goat serum by ammonium sulphate precipitation followed by antigen affinity chromatography using the immunizing peptide.

Supplied at 0.5 mg/ml in Tris saline, 0.02% sodium azide, pH7.3 with 0.5% bovine serum albumin.

Aliquot and store at -20°C. Minimize freezing and thawing.

### Applications Tested

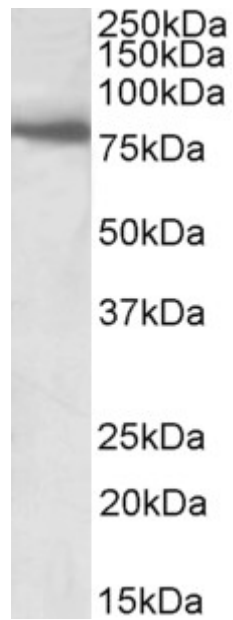
**Peptide ELISA:** antibody detection limit dilution 1:128000.

**Western blot:** Approx 80kDa band observed in Human and Rat Skeletal Muscle lysates (calculated MW of 80.4kDa according to NP\_789794.1). Recommended concentration: 1-3µg/ml.

### Species Reactivity

**Tested:** Human, Rat

**Expected from sequence similarity:** Human, Mouse, Rat, Dog, Cow



EB09989 (1 $\mu$ g/ml) staining of Human Skeletal Muscle lysate (35 $\mu$ g protein in RIPA buffer). Primary incubation was 1 hour. Detected by chemiluminescence.



EB09989 (0.5 $\mu$ g/ml) staining of Rat Skeletal Muscle lysate (35 $\mu$ g protein in RIPA buffer). Primary incubation was 1 hour. Detected by chemiluminescence.