



UK Office

Everest Biotech Ltd

Cherwell Innovation Centre
77 Heyford Park
Upper Heyford
Oxfordshire
OX25 5HD
UK

Enquiries:

info@everestbiotech.com

Sales:

sales@everestbiotech.com

Tech support:

support@everestbiotech.com

Tel: +44 (0)1869 238326

Fax: +44 (0)1869 238327

US Office

Everest Biotech c/o Abcore

405 Maple Street, Suite A106
Ramona,
CA 92065
USA

Inquiries:

info@everestbiotech.com

Sales:

usasales@everestbiotech.com

Tech support:

support@everestbiotech.com

Tel: 888-320-4628 (toll-free)

Fax: 888-841-9041

www.everestbiotech.com

**Research Use Only. Not for
diagnostic or therapeutic use.**

EB09989 - Goat Anti-BBS7 Antibody

Size: 100µg specific antibody in 200µl



Target Protein

Principal Names: Bardet-Biedl syndrome 7, Bardet-Biedl syndrome 7 protein, BBS2L1, BBS2-like 1, FLJ10715, BBS7

Official Symbol: BBS7

Accession Number(s): NP_789794.1; NP_060660.2

Human GeneID(s): [55212](#)

Non-Human GeneID(s): 71492 (mouse), 361930 (rat)

Important Comments: This antibody is expected to recognize both isoforms (NP_789794.1; NP_060660.2).

Immunogen

Peptide with sequence HCILEEADHLQE, from the internal region of the protein sequence according to NP_789794.1; NP_060660.2.

Please note the [peptide](#) is available for sale.

Purification and Storage

Purified from goat serum by ammonium sulphate precipitation followed by antigen affinity chromatography using the immunizing peptide.

Supplied at 0.5 mg/ml in Tris saline, 0.02% sodium azide, pH7.3 with 0.5% bovine serum albumin.

Aliquot and store at -20°C. Minimize freezing and thawing.

Applications Tested

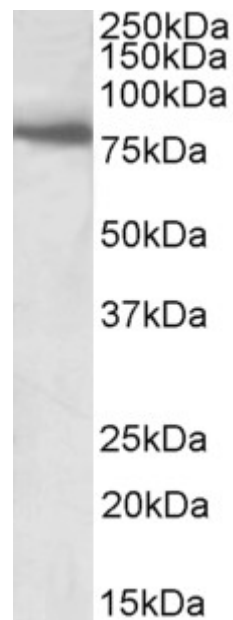
Peptide ELISA: antibody detection limit dilution 1:128000.

Western blot: Approx 80kDa band observed in Human and Rat Skeletal Muscle lysates (calculated MW of 80.4kDa according to NP_789794.1). Recommended concentration: 1-3µg/ml.

Species Reactivity

Tested: Human, Rat

Expected from sequence similarity: Human, Mouse, Rat, Dog, Cow



EB09989 (1µg/ml) staining of Human Skeletal Muscle lysate (35µg protein in RIPA buffer). Primary incubation was 1 hour. Detected by chemiluminescence.



EB09989 (0.5µg/ml) staining of Rat Skeletal Muscle lysate (35µg protein in RIPA buffer). Primary incubation was 1 hour. Detected by chemiluminescence.