

## UK Office

### Everest Biotech Ltd

Cherwell Innovation Centre  
77 Heyford Park  
Upper Heyford  
Oxfordshire  
OX25 5HD  
UK

Enquiries:

[info@everestbiotech.com](mailto:info@everestbiotech.com)

Sales:

[sales@everestbiotech.com](mailto:sales@everestbiotech.com)

Tech support:

[support@everestbiotech.com](mailto:support@everestbiotech.com)

Tel: +44 (0)1869 238326

[www.everestbiotech.com](http://www.everestbiotech.com)

**Research Use Only. Not for  
diagnostic or therapeutic use.**

## EB12156 - Goat Anti-BCAR1 Antibody

Size: 100µg specific antibody in 200µl



### Target Protein

**Principal Names:** BCAR1, breast cancer anti-estrogen resistance 1, CAS, CAS1, CASS1, CRKAS, P130Cas, Cas scaffolding protein family member 1, Crk-associated substrate p130Cas, breast cancer anti-estrogen resistance protein 1

**Official Symbol:** BCAR1

**Accession Number(s):** NP\_001164185.1; NP\_001164186.1; NP\_001164187.1; NP\_001164188.1; NP\_001164189.1; NP\_055382.2; NP\_001164190.1; NP\_001164191.1; NP\_001164192.1

**Human GeneID(s):** [9564](#)

**Non-Human GeneID(s):** 12927 (mouse), 25414 (rat)

**Important Comments:** This antibody is expected to recognize reported isoforms 1, 2, 3, 5, 6 and 7.

### Immunogen

Peptide with sequence C-KQTSTFSKQTPHH, from the internal region of the protein sequence according to NP\_001164185.1; NP\_001164186.1; NP\_001164187.1; NP\_001164188.1; NP\_001164189.1; NP\_055382.2; NP\_001164190.1; NP\_001164191.1; NP\_001164192.1.

Please note the [peptide](#) is available for sale.

### Purification and Storage

Purified from goat serum by ammonium sulphate precipitation followed by antigen affinity chromatography using the immunizing peptide.

Supplied at 0.5 mg/ml in Tris saline, 0.02% sodium azide, pH7.3 with 0.5% bovine serum albumin.

Aliquot and store at -20°C. Minimize freezing and thawing.

### Applications Tested

**Peptide ELISA:** antibody detection limit dilution 1:128000.

**Western blot:** Approx 100kDa band observed in lysates of Human breast cancer and of cell line MCF7 (calculated MW of 97.9kDa according to NP\_001164185.1).

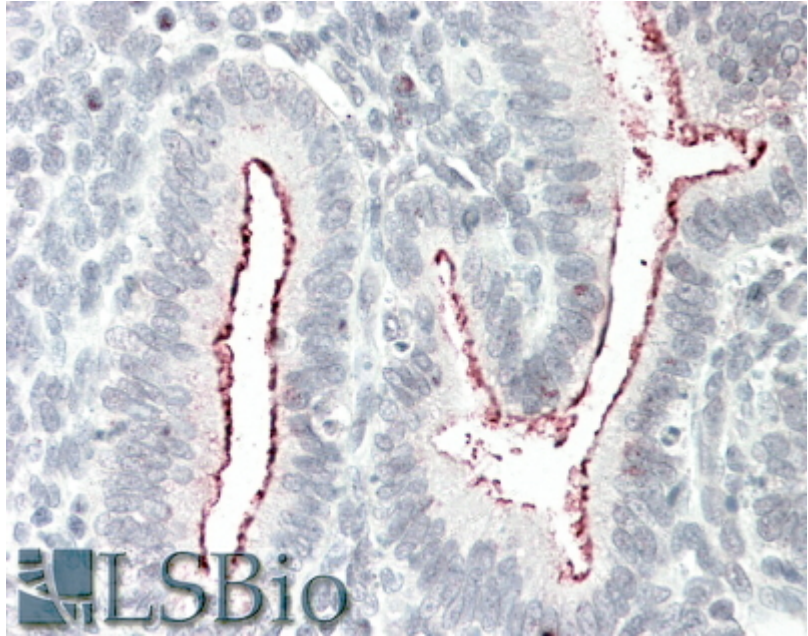
Recommended concentration: 1-3µg/ml.

**IHC:** In paraffin embedded Human Uterus shows strong staining at the glandular side of the endometrial epithelium. Recommended concentration, 5-10µg/ml.

### Species Reactivity

**Tested:** Human

**Expected from sequence similarity:** Human, Mouse, Rat, Dog



EB12156 (5 $\mu$ g/ml) staining of paraffin embedded Human Uterus. Steamed antigen retrieval with citrate buffer pH 6, AP-staining.



EB12156 (1 $\mu$ g/ml) staining of MCF7 (A) and Human Breast cancer (B) lysates (35 $\mu$ g protein in RIPA buffer). Primary incubation was 1 hour. Detected by chemiluminescence.