



UK Office

Everest Biotech Ltd

Cherwell Innovation Centre
77 Heyford Park
Upper Heyford
Oxfordshire
OX25 5HD
UK

Enquiries:

info@everestbiotech.com

Sales:

sales@everestbiotech.com

Tech support:

support@everestbiotech.com

Tel: +44 (0)1869 238326

Fax: +44 (0)1869 238327

US Office

Everest Biotech c/o Abcore

405 Maple Street, Suite A106
Ramona,
CA 92065
USA

Inquiries:

info@everestbiotech.com

Sales:

usasales@everestbiotech.com

Tech support:

support@everestbiotech.com

Tel: 888-320-4628 (toll-free)

Fax: 888-841-9041

www.everestbiotech.com

**Research Use Only. Not for
diagnostic or therapeutic use.**

EB12156 - Goat Anti-BCAR1 Antibody

Size: 100µg specific antibody in 200µl



Target Protein

Principal Names: BCAR1, breast cancer anti-estrogen resistance 1, CAS, CAS1, CASS1, CRKAS, P130Cas, Cas scaffolding protein family member 1, Crk-associated substrate p130Cas, breast cancer anti-estrogen resistance protein 1

Official Symbol: BCAR1

Accession Number(s): NP_001164185.1; NP_001164186.1; NP_001164187.1; NP_001164188.1; NP_001164189.1; NP_055382.2; NP_001164190.1; NP_001164191.1; NP_001164192.1

Human GeneID(s): [9564](#)

Non-Human GeneID(s): 12927 (mouse), 25414 (rat)

Important Comments: This antibody is expected to recognize reported isoforms 1, 2, 3, 5, 6 and 7.

Immunogen

Peptide with sequence C-KQTSTFSKQTPHH, from the internal region of the protein sequence according to NP_001164185.1; NP_001164186.1; NP_001164187.1; NP_001164188.1; NP_001164189.1; NP_055382.2; NP_001164190.1; NP_001164191.1; NP_001164192.1.

Please note the [peptide](#) is available for sale.

Purification and Storage

Purified from goat serum by ammonium sulphate precipitation followed by antigen affinity chromatography using the immunizing peptide.

Supplied at 0.5 mg/ml in Tris saline, 0.02% sodium azide, pH7.3 with 0.5% bovine serum albumin.

Aliquot and store at -20°C. Minimize freezing and thawing.

Applications Tested

Peptide ELISA: antibody detection limit dilution 1:128000.

Western blot: Approx 100kDa band observed in lysates of Human breast cancer and of cell line MCF7 (calculated MW of 97.9kDa according to NP_001164185.1).

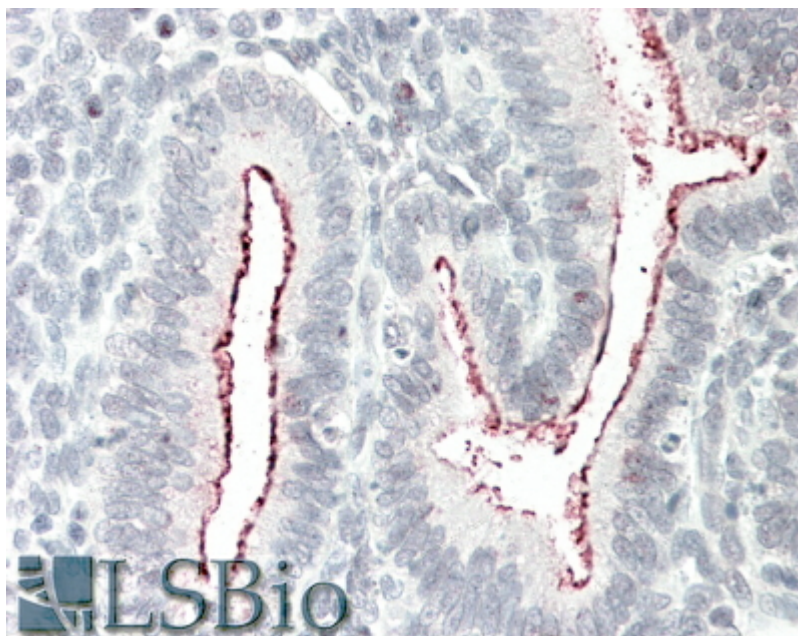
Recommended concentration: 1-3µg/ml.

IHC: In paraffin embedded Human Uterus shows strong staining at the glandular side of the endometrial epithelium. Recommended concentration, 5-10µg/ml.

Species Reactivity

Tested: Human

Expected from sequence similarity: Human, Mouse, Rat, Dog



EB12156 (5µg/ml) staining of paraffin embedded Human Uterus. Steamed antigen retrieval with citrate buffer pH 6, AP-staining.



EB12156 (1µg/ml) staining of MCF7 (A) and Human Breast cancer (B) lysates (35µg protein in RIPA buffer). Primary incubation was 1 hour. Detected by chemiluminescence.