



UK Office

Everest Biotech Ltd

Cherwell Innovation Centre
77 Heyford Park
Upper Heyford
Oxfordshire
OX25 5HD
UK

Enquiries:

info@everestbiotech.com

Sales:

sales@everestbiotech.com

Tech support:

support@everestbiotech.com

Tel: +44 (0)1869 238326

www.everestbiotech.com

**Research Use Only. Not for
diagnostic or therapeutic use.**

EB10375 - Goat Anti-BCL2A1 Antibody

Size: 100µg specific antibody in 200µl



Target Protein

Principal Names: ACC-1, ACC-2, BCL2L5, BCL2-related protein A1, BFL1, GRS, HBPA1, hematopoietic BCL2-related protein A1, BCL2A1

Official Symbol: BCL2A1

Accession Number(s): NP_004040.1; NP_001108207.1

Human GeneID(s): [597](#)

Important Comments: This antibody is expected to recognize both reported isoforms (NP_004040.1; NP_001108207.1).

Immunogen

Peptide with sequence C-NVVSVDART, from the internal region of the protein sequence according to NP_004040.1; NP_001108207.1.

Please note the [peptide](#) is available for sale.

Purification and Storage

Purified from goat serum by ammonium sulphate precipitation followed by antigen affinity chromatography using the immunizing peptide.

Supplied at 0.5 mg/ml in Tris saline, 0.02% sodium azide, pH7.3 with 0.5% bovine serum albumin.

Aliquot and store at -20°C. Minimize freezing and thawing.

Applications Tested

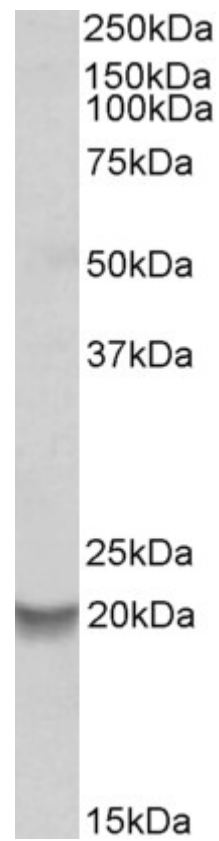
Peptide ELISA: antibody detection limit dilution 1:8000.

Western blot: Approx 20kDa band observed in Human Bone Marrow lysates (calculated MW of 20.1kDa according to NP_004040.1). Recommended concentration: 0.1-0.3µg/ml.

Species Reactivity

Tested: Human

Expected from sequence similarity: Human, Dog, Cow, Pig



EB10275 (0.2 μ g/ml) staining of Human Bone Marrow lysate (35 μ g protein in RIPA buffer). Primary incubation was 1 hour. Detected by chemiluminescence.