



UK Office

Everest Biotech Ltd

Cherwell Innovation Centre
77 Heyford Park
Upper Heyford
Oxfordshire
OX25 5HD
UK

Enquiries:

info@everestbiotech.com

Sales:

sales@everestbiotech.com

Tech support:

support@everestbiotech.com

Tel: +44 (0)1869 238326

www.everestbiotech.com

**Research Use Only. Not for
diagnostic or therapeutic use.**

EB12141 - Goat Anti-BEND5 Antibody

Size: 100µg specific antibody in 200µl



Target Protein

Principal Names: BEND5, BEN domain containing 5, C1orf165

Official Symbol: BEND5

Accession Number(s): NP_078879.2

Human GeneID(s): [79656](#)

Non-Human GeneID(s): 67621 (mouse), 362564 (rat)

Immunogen

Peptide with sequence CKNEERREAKYNLQ, from the C Terminus of the protein sequence according to NP_078879.2.

Please note the [peptide](#) is available for sale.

Purification and Storage

Purified from goat serum by ammonium sulphate precipitation followed by antigen affinity chromatography using the immunizing peptide.

Supplied at 0.5 mg/ml in Tris saline, 0.02% sodium azide, pH7.3 with 0.5% bovine serum albumin.

Aliquot and store at -20°C. Minimize freezing and thawing.

Applications Tested

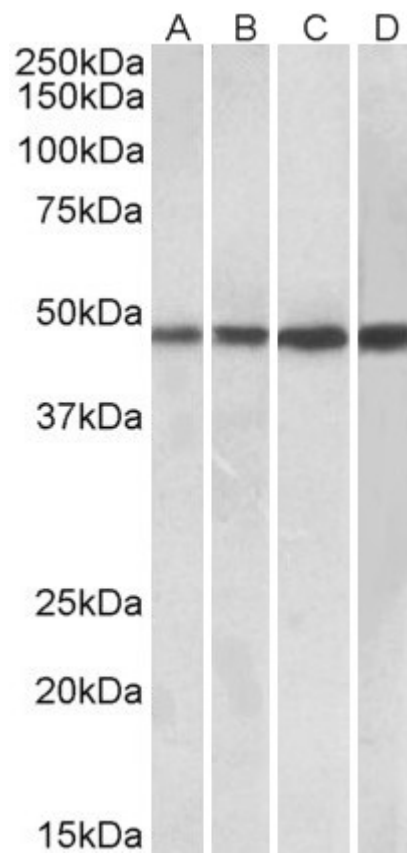
Peptide ELISA: antibody detection limit dilution 1:128000.

Western blot: Approx 48kDa band observed in Human Tonsil and Spleen and Mouse Spleen lysates and also in lysates of cell line Daudi (calculated MW of 48.2kDa according to NP_078879.2). Recommended concentration: 0.3-1µg/ml.

Species Reactivity

Tested: Human , Mouse

Expected from sequence similarity: Human, Mouse, Rat, Dog, Cow



EB12141 (0.3 μ g/ml) staining of Daudi (A), Human Tonsil (B), Human Spleen (C) and Mouse Spleen (D) lysates (35 μ g protein in RIPA buffer). Primary incubation was 1 hour. Detected by chemiluminescence.