



UK Office

Everest Biotech Ltd

Cherwell Innovation Centre
77 Heyford Park
Upper Heyford
Oxfordshire
OX25 5HD
UK

Enquiries:

info@everestbiotech.com

Sales:

sales@everestbiotech.com

Tech support:

support@everestbiotech.com

Tel: +44 (0)1869 238326

Fax: +44 (0)1869 238327

US Office

Everest Biotech c/o Abcore

405 Maple Street, Suite A106
Ramona,
CA 92065
USA

Inquiries:

info@everestbiotech.com

Sales:

usasales@everestbiotech.com

Tech support:

support@everestbiotech.com

Tel: 888-320-4628 (toll-free)

Fax: 888-841-9041

www.everestbiotech.com

**Research Use Only. Not for
diagnostic or therapeutic use.**

EB12110 - Goat Anti-BHLHE22 (aa128-141) Antibody

Size: 100µg specific antibody in 200µl



Target Protein

Principal Names: BHLHE22, basic helix-loop-helix family, member e22, BHLHB5, Beta3, CAGL85, TNRC20, basic helix-loop-helix domain containing, class B, 5, class B basic helix-loop-helix protein 5, class E basic helix-loop-helix protein 22, trinucleotide repeat containing 20, trinucleotide repeat-containing gene 20 protein

Official Symbol: BHLHE22

Accession Number(s): NP_689627.1

Human GeneID(s): [27319](#)

Immunogen

Peptide with sequence C-KYGESASRGSVAES, from the internal region of the protein sequence according to NP_689627.1.

Please note the [peptide](#) is available for sale.

Purification and Storage

Purified from goat serum by ammonium sulphate precipitation followed by antigen affinity chromatography using the immunizing peptide.

Supplied at 0.5 mg/ml in Tris saline, 0.02% sodium azide, pH7.3 with 0.5% bovine serum albumin.

Aliquot and store at -20°C. Minimize freezing and thawing.

Applications Tested

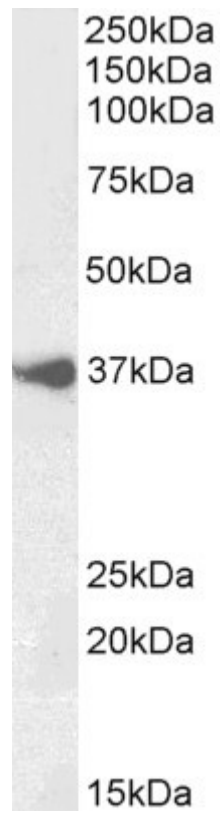
Peptide ELISA: antibody detection limit dilution 1:32000.

Western blot: Approx 37kDa band observed in Human (Cerebellum) Brain lysates (calculated MW of 37.0kDa according to NP_689627.1). Recommended concentration: 1-3µg/ml.

Species Reactivity

Tested: Human

Expected from sequence similarity: Human, Pig



EB12110 (1µg/ml) staining of Human Cerebellum lysate (35µg protein in RIPA buffer). Primary incubation was 1 hour. Detected by chemiluminescence.