



## UK Office

### Everest Biotech Ltd

Cherwell Innovation Centre  
77 Heyford Park  
Upper Heyford  
Oxfordshire  
OX25 5HD  
UK

Enquiries:

[info@everestbiotech.com](mailto:info@everestbiotech.com)

Sales:

[sales@everestbiotech.com](mailto:sales@everestbiotech.com)

Tech support:

[support@everestbiotech.com](mailto:support@everestbiotech.com)

Tel: +44 (0)1869 238326

[www.everestbiotech.com](http://www.everestbiotech.com)

**Research Use Only. Not for  
diagnostic or therapeutic use.**

## EB10370 - Goat Anti-BIRC3 (aa 109 -118) Antibody

Size: 100µg specific antibody in 200µl



### Target Protein

**Principal Names:** AIP1, API2, apoptosis inhibitor 2, baculoviral IAP repeat-containing 3, baculoviral IAP repeat-containing protein 3, CIAP2, c-IAP2, HAIP1, HIAP1, MALT2, MIHC, RNF49, TNFR2-TRAF signaling complex protein, BIRC3

**Official Symbol:** BIRC3

**Accession Number(s):** NP\_001156.1

**Human GeneID(s):** [330](#)

**Important Comments:** Reported variants represent identical protein: NP\_892007.1, NP\_001156.1

### Immunogen

Peptide with sequence C-SQPTFPSSVT, from the internal region of the protein sequence according to NP\_001156.1.

Please note the [peptide](#) is available for sale.

### Purification and Storage

Purified from goat serum by ammonium sulphate precipitation followed by antigen affinity chromatography using the immunizing peptide.

Supplied at 0.5 mg/ml in Tris saline, 0.02% sodium azide, pH7.3 with 0.5% bovine serum albumin.

Aliquot and store at -20°C. Minimize freezing and thawing.

### Applications Tested

**Peptide ELISA:** antibody detection limit dilution 1:32000.

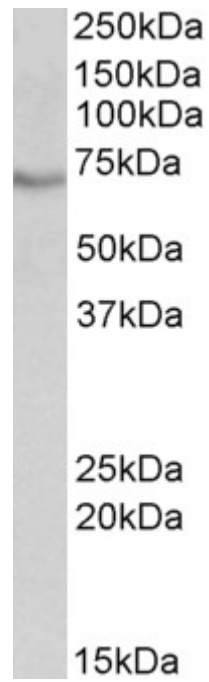
**Western blot:** Approx 70kDa band observed in lysates of cell line HeLa (calculated MW of 68.4kDa according to NP\_001156.1). Recommended concentration: 0.1-0.3µg/ml.

**IHC:** Paraffin embedded Human Tonsil. Recommended concentration: 5µg/ml.

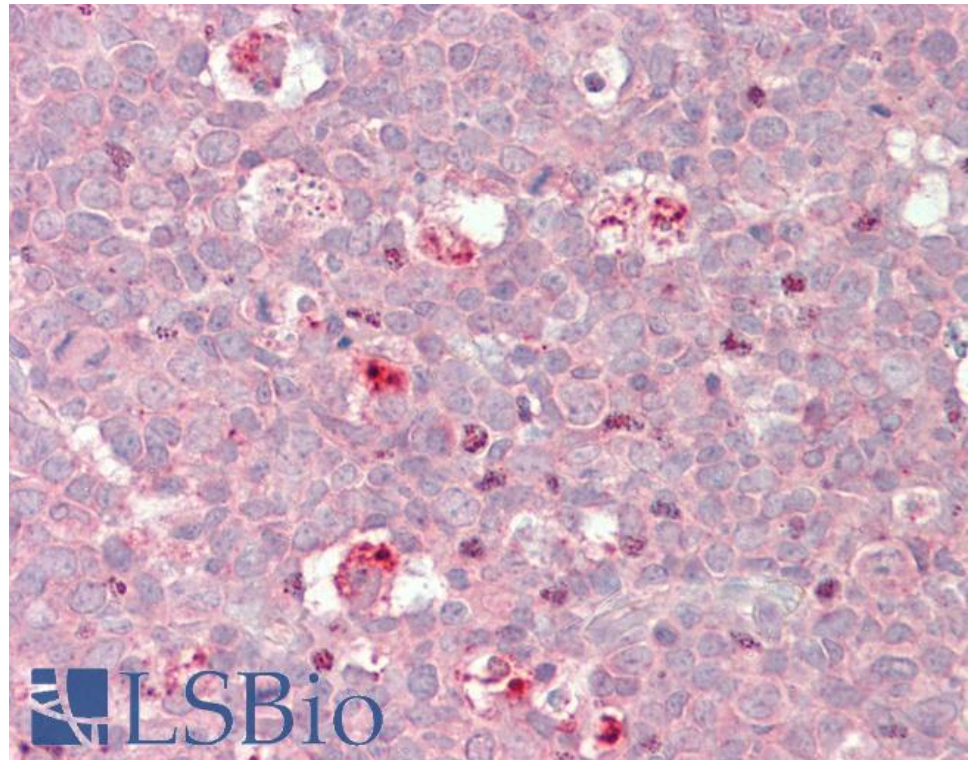
### Species Reactivity

**Tested:** Human

**Expected from sequence similarity:** Human



EB10370 (0.1 $\mu$ g/ml) staining of HeLa lysate (35 $\mu$ g protein in RIPA buffer). Primary incubation was 1 hour.  
Detected by chemiluminescence.



EB10370 (5 $\mu$ g/ml) staining of paraffin embedded Human Tonsil. Steamed antigen retrieval with citrate buffer pH 6, AP-staining.