



UK Office

Everest Biotech Ltd

Cherwell Innovation Centre
77 Heyford Park
Upper Heyford
Oxfordshire
OX25 5HD
UK

Enquiries:

info@everestbiotech.com

Sales:

sales@everestbiotech.com

Tech support:

support@everestbiotech.com

Tel: +44 (0)1869 238326

Fax: +44 (0)1869 238327

US Office

Everest Biotech c/o Abcore

405 Maple Street, Suite A106
Ramona,
CA 92065
USA

Inquiries:

info@everestbiotech.com

Sales:

usasales@everestbiotech.com

Tech support:

support@everestbiotech.com

Tel: 888-320-4628 (toll-free)

Fax: 888-841-9041

www.everestbiotech.com

**Research Use Only. Not for
diagnostic or therapeutic use.**

EB07997 - Goat Anti-Bisphosphate 3'-nucleotidase Antibody

Size: 100µg specific antibody in 200µl



Target Protein

Principal Names: bisphosphate 3'-nucleotidase, 3'(2'), 5'-bisphosphate nucleotidase 1, PIP, BPntase, PAP-inositol-1,4-phosphatase

Official Symbol: BPNT1

Accession Number(s): NP_006076.4

Human GeneID(s): [10380](#)

Non-Human GeneID(s): 23827 (mouse), 64473 (rat)

Immunogen

Peptide with sequence C-RNYDYYASRVESIK, from the C Terminus of the protein sequence according to NP_006076.4.

Please note the [peptide](#) is available for sale.

Purification and Storage

Purified from goat serum by ammonium sulphate precipitation followed by antigen affinity chromatography using the immunizing peptide.

Supplied at 0.5 mg/ml in Tris saline, 0.02% sodium azide, pH7.3 with 0.5% bovine serum albumin.

Aliquot and store at -20°C. Minimize freezing and thawing.

Applications Tested

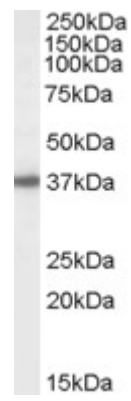
Peptide ELISA: antibody detection limit dilution 1:4000.

Western blot: Approx 37kDa band observed in Human Liver lysates (calculated MW of 33.4kDa according to NP_006076.4). The observed molecular weight corresponds to earlier findings in literature with different antibodies (Spiegelberg et al, J Biol Chem. 1999 May 7;274(19):13619-28.; PMID: 10224133). Recommended concentration: 1-3µg/ml.

Species Reactivity

Tested: Human

Expected from sequence similarity: Human, Mouse, Rat



EB07997 (1µg/ml) staining of Human Liver lysate (35µg protein in RIPA buffer). Primary incubation was 1 hour.
Detected by chemiluminescence.