



UK Office

Everest Biotech Ltd

Cherwell Innovation Centre
77 Heyford Park
Upper Heyford
Oxfordshire
OX25 5HD
UK

Enquiries:

info@everestbiotech.com

Sales:

sales@everestbiotech.com

Tech support:

support@everestbiotech.com

Tel: +44 (0)1869 238326

Fax: +44 (0)1869 238327

US Office

Everest Biotech c/o Abcore

405 Maple Street, Suite A106
Ramona,
CA 92065
USA

Inquiries:

info@everestbiotech.com

Sales:

usasales@everestbiotech.com

Tech support:

support@everestbiotech.com

Tel: 888-320-4628 (toll-free)

Fax: 888-841-9041

www.everestbiotech.com

**Research Use Only. Not for
diagnostic or therapeutic use.**

EB05111 - Goat Anti-BLNK / SLP-65 Antibody

Size: 100µg specific antibody in 200µl



Target Protein

Principal Names: BLNK, SLP-65, B-cell linker, BASH, BLNK-s, Ly57, MGC111051, SLP65, B cell linker protein, B-cell adapter containing a SH2 domain protein, B-cell adapter containing a Src homology 2 domain protein, OTTHUMP00000020167, Src homology 2 domain-containing leukocyte protein of 65 kDa, BLNK-S, LY57, OTTHUMP00000020168

Official Symbol: BLNK

Accession Number(s): NP_037446.1; NP_001107566.1; NP_001245369.1; NP_001245370.1; NP_001245371.1

Human GeneID(s): [29760](#)

Non-Human GeneID(s): 17060 (mouse)

Important Comments: This antibody is expected to recognize all reported isoforms.

Immunogen

Peptide with sequence C-KDSTRCLKYAVKVS, from the C Terminus of the protein sequence according to NP_037446.1; NP_001107566.1; NP_001245369.1; NP_001245370.1; NP_001245371.1.

Please note the [peptide](#) is available for sale.

Purification and Storage

Purified from goat serum by ammonium sulphate precipitation followed by antigen affinity chromatography using the immunizing peptide.

Supplied at 0.5 mg/ml in Tris saline, 0.02% sodium azide, pH7.3 with 0.5% bovine serum albumin.

Aliquot and store at -20°C. Minimize freezing and thawing.

Applications Tested

Peptide ELISA: antibody detection limit dilution 1:32000.

Western blot: Approx 70-75kDa band observed in lysates of cell line Daudi (calculated MW of 50.5kDa according to NP_037446.1). This molecular weight is routinely observed by other sources. Recommended concentration 0.3-1µg/ml. Primary incubation 1 hour at room temperature.

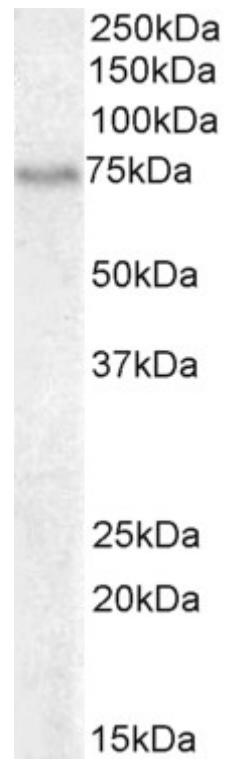
Immunofluorescence: Strong expression of the protein seen in the membranes of HepG2 cells. Recommended concentration: 10µg/ml.

Flow Cytometry: Flow cytometric analysis of Daudi cells. Recommended concentration: 10µg/ml.

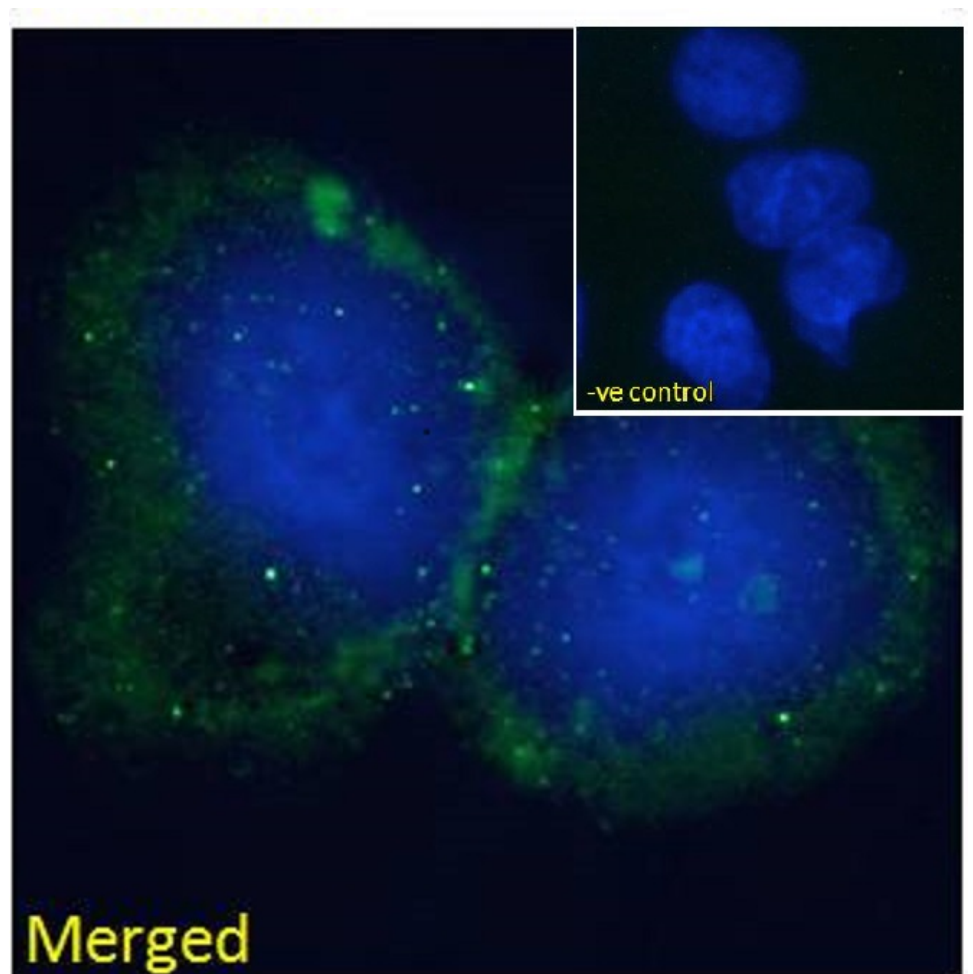
Species Reactivity

Tested: Human

Expected from sequence similarity: Human, Mouse, Rat, Dog, Pig, Cow

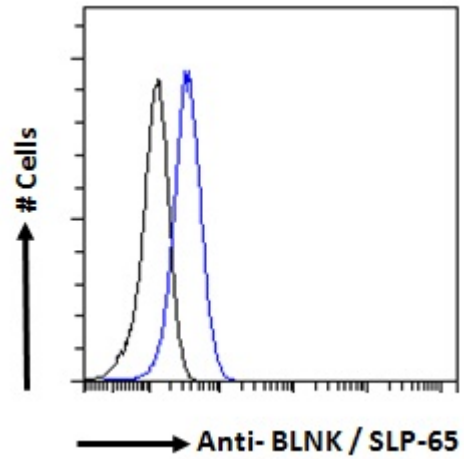


EB05111 (0.3 μ g/ml) staining of Daudi cell lysate (35 μ g protein in RIPA buffer). Detected by chemiluminescence.



EB05111 Immunofluorescence analysis of paraformaldehyde fixed HepG2 cells, permeabilized with 0.15% Triton. Primary incubation 1hr (10 μ g/ml) followed by Alexa Fluor 488 secondary antibody (2 μ g/ml), showing

some membrane staining. The nuclear stain is DAPI (blue). Negative control: Unimmunized goat IgG (10ug/ml) followed by Alexa Fluor 488 secondary antibody (2ug/ml).



EB05111 Flow cytometric analysis of paraformaldehyde fixed Daudi cells (blue line), permeabilized with 0.5% Triton. Primary incubation 1hr (10ug/ml) followed by Alexa Fluor 488 secondary antibody (1ug/ml). IgG control: Unimmunized goat IgG (black line) followed by Alexa Fluor 488 secondary antibody.