

UK Office

Everest Biotech Ltd

Cherwell Innovation Centre
77 Heyford Park
Upper Heyford
Oxfordshire
OX25 5HD
UK

Enquiries:

info@everestbiotech.com

Sales:

sales@everestbiotech.com

Tech support:

support@everestbiotech.com

Tel: +44 (0)1869 238326

www.everestbiotech.com

**Research Use Only. Not for
diagnostic or therapeutic use.**

EB12495 - Goat Anti-BMI1 (aa237-251) Antibody

Size: 100µg specific antibody in 200µl



Target Protein

Principal Names: BMI1, BMI1 polycomb ring finger oncogene, FLV12/BMI1, PCGF4, RNF51, B lymphoma Mo-MLV insertion region 1 homolog, flvi-2/bmi-1, murine leukemia viral (bmi-1) oncogene homolog, polycomb complex protein BMI-1, polycomb group RING finger protein 4, polycomb

Official Symbol: BMI1

Accession Number(s): NP_005171.4

Human GeneID(s): [648](#)

Non-Human GeneID(s): 12151 (mouse)

Immunogen

Peptide with sequence C-SHQRDGLTNAGELES, from the internal region of the protein sequence according to NP_005171.4.

Please note the [peptide](#) is available for sale.

Purification and Storage

Purified from goat serum by ammonium sulphate precipitation followed by antigen affinity chromatography using the immunizing peptide.

Supplied at 0.5 mg/ml in Tris saline, 0.02% sodium azide, pH7.3 with 0.5% bovine serum albumin.

Aliquot and store at -20°C. Minimize freezing and thawing.

Applications Tested

Peptide ELISA: antibody detection limit dilution 1:128000.

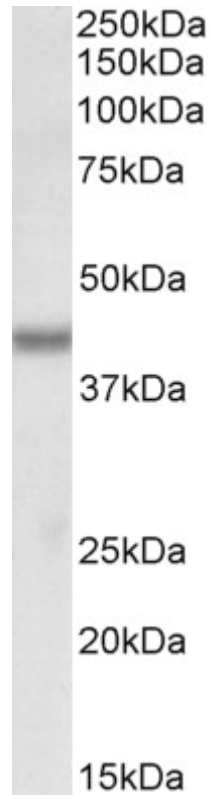
Western blot: Approx 40kDa band observed in nuclear lysates of cell lines K562 and NIH3T3 (calculated MW of 36.9kDa according to NP_005171.4). This band corresponds to earlier findings in literature with different antibodies (Chagraoui et al, Genes Dev. 2006 Aug 1;20(15):2110-20. PMID: 16882984). Recommended concentration: 0.1-0.3µg/ml. Approx 37kDa band observed in Pig Bone Marrow lysates (calculated MW of 36.9kDa according to NP_001272900.1). Recommended concentration: 1-3µg/ml.

IHC: Paraffin embedded Human Testis. Recommended concentration: 5µg/ml.

Species Reactivity

Tested: Human, Mouse, Pig

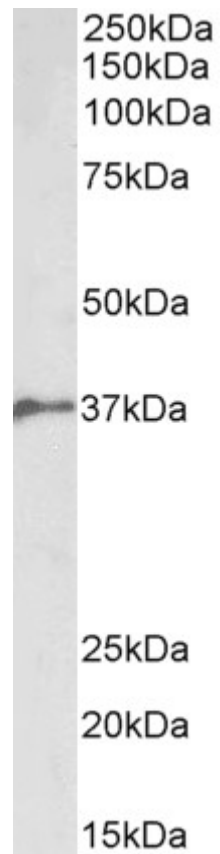
Expected from sequence similarity: Human, Mouse, Dog, Pig



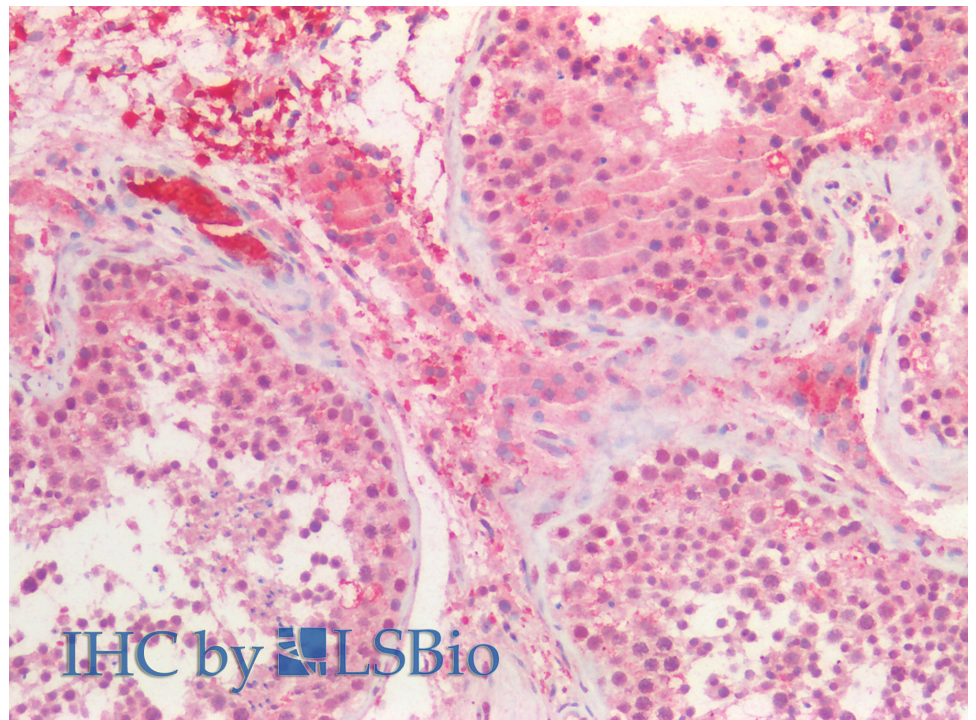
EB12495 (0.1 µg/ml) staining of K562 nuclear lysate (35 µg protein in RIPA buffer). Primary incubation was 1 hour. Detected by chemiluminescence.



EB12495 (0.3 µg/ml) staining of NIH3T3 nuclear lysate (35 µg protein in RIPA buffer). Primary incubation was 1 hour. Detected by chemiluminescence.



EB12495 (2 μ g/ml) staining of Pig Bone Marrow lysate (35 μ g protein in RIPA buffer). Primary incubation was 1 hour. Detected by chemiluminescence.



EB12495 (5 μ g/ml) staining of paraffin embedded Human Testis. Steamed antigen retrieval with citrate buffer pH 6, AP-staining.