

UK Office

Everest Biotech Ltd

Cherwell Innovation Centre
77 Heyford Park
Upper Heyford
Oxfordshire
OX25 5HD
UK

Enquiries:

info@everestbiotech.com

Sales:

sales@everestbiotech.com

Tech support:

support@everestbiotech.com

Tel: +44 (0)1869 238326

www.everestbiotech.com

**Research Use Only. Not for
diagnostic or therapeutic use.**

EB12632 - Goat Anti-BMP1 (aa284-296) Antibody

Size: 100µg specific antibody in 200µl



Target Protein

Principal Names: BMP1, bone morphogenetic protein 1, OI13, PCOLC, PCP, PCP2, TLD, mammalian tolloid protein, procollagen C-endopeptidase, procollagen C-proteinase

Official Symbol: BMP1

Accession Number(s): NP_001190.1; NP_006120.1

Human GeneID(s): [649](#)

Non-Human GeneID(s): 12153 (mouse), 83470 (rat)

Important Comments: This antibody is expected to recognize both reported isoforms (NP_001190.1; NP_006120.1).

Immunogen

Peptide with sequence C-DTIVPKYEVNGVK, from the internal region of the protein sequence according to NP_001190.1; NP_006120.1.

Please note the [peptide](#) is available for sale.

Purification and Storage

Purified from goat serum by ammonium sulphate precipitation followed by antigen affinity chromatography using the immunizing peptide.

Supplied at 0.5 mg/ml in Tris saline, 0.02% sodium azide, pH7.3 with 0.5% bovine serum albumin.

Aliquot and store at -20°C. Minimize freezing and thawing.

Applications Tested

Peptide ELISA: antibody detection limit dilution 1:128000.

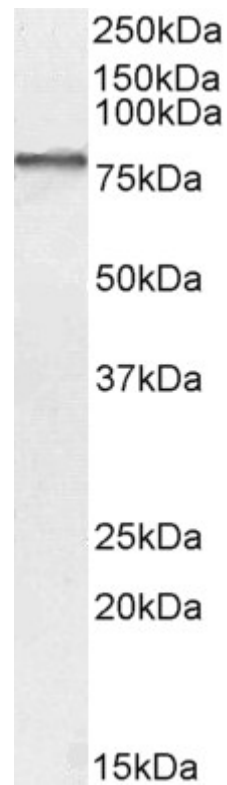
Western blot: Approx 75-80kDa band observed in Human Liver lysates and in lysates of cell. lines HeLa, Jurkat, MCF7, NIH3T3 and PC12 (calculated MW of 82.9kDa according to Human NP_001190.1 and, 93.5kDa according to Mouse NP_001409046.1, and Rat XP_006252347.1). This molecular weight is observed by other sources and was successfully blocked by incubation with the immunizing peptide, corresponding to the cleaved BMP-1 propeptide. Recommended concentration: 1-3µg/ml. Primary incubation 1 hour at room temperature.

IHC: Paraffin embedded Human Colon and Placenta. Recommended concentration: 6µg/ml.

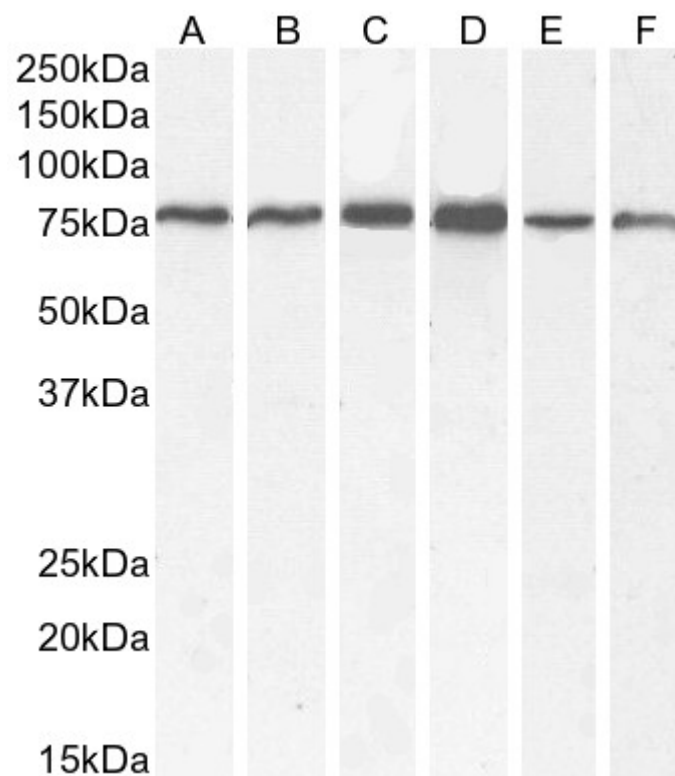
Species Reactivity

Tested: Human, Mouse, Rat

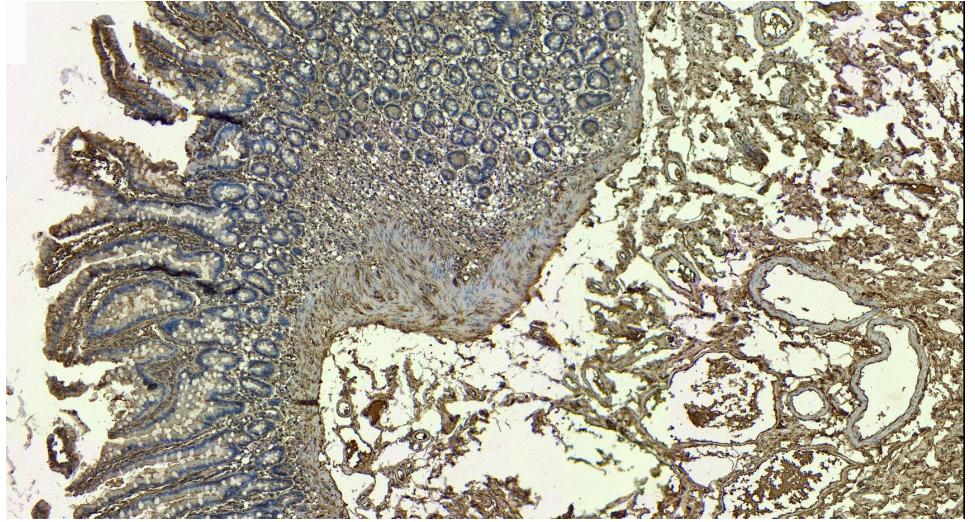
Expected from sequence similarity: Human, Mouse, Rat, Dog, Pig, Cow



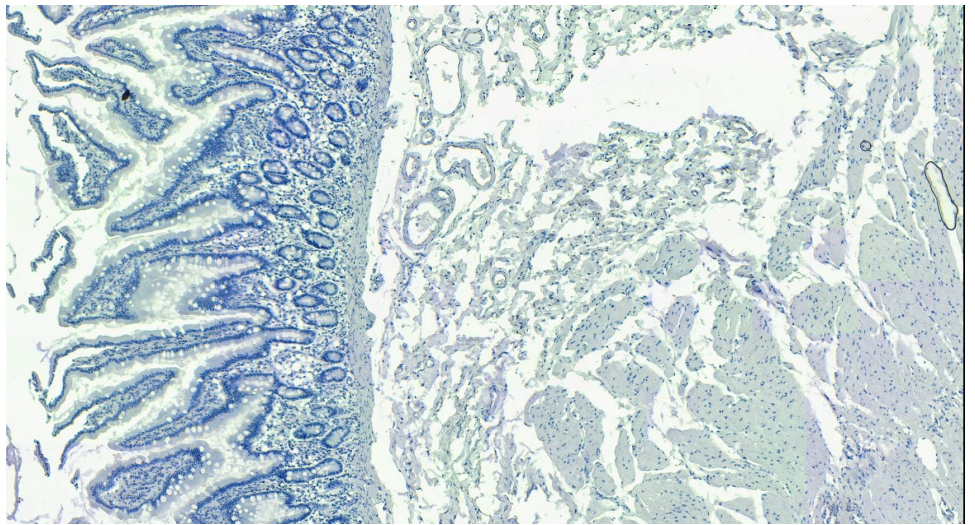
EB12632 (1ug/ml) staining of Human Liver lysate (35µg protein in RIPA buffer). Detected by chemiluminescence.



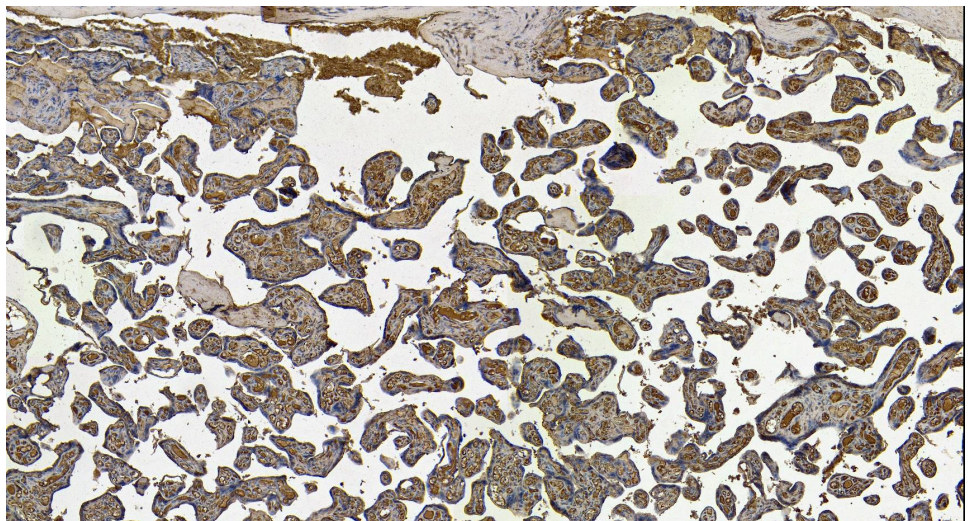
EB12632 (2ug/ml) staining of Jurkat (A) and (1ug/ml) A549 (B), MCF7 (C) HeLa (D), NIH3T3 (E) and PC12 (F) cell lysate (35µg protein in RIPA buffer). Detected by chemiluminescence.



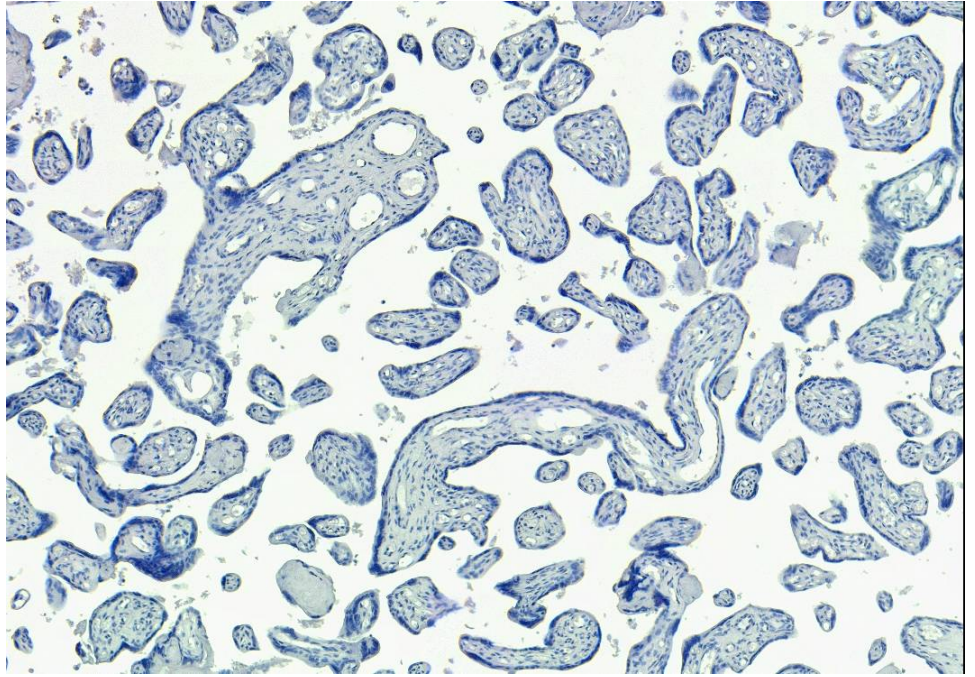
EB12632 (6µg/ml) staining of paraffin embedded Human Colon. Heat induced antigen retrieval with citrate buffer pH 6, HRP-staining.



EB12632 Negative Control showing staining of paraffin embedded Human Colon, with no primary antibody.



EB12632 (6µg/ml) staining of paraffin embedded Human Placenta. Heat induced antigen retrieval with citrate buffer pH 6, HRP-staining.



EB12632 Negative Control showing staining of paraffin embedded Human Placenta, with no primary antibody.