



UK Office

Everest Biotech Ltd

Cherwell Innovation Centre
77 Heyford Park
Upper Heyford
Oxfordshire
OX25 5HD
UK

Enquiries:

info@everestbiotech.com

Sales:

sales@everestbiotech.com

Tech support:

support@everestbiotech.com

Tel: +44 (0)1869 238326

Fax: +44 (0)1869 238327

US Office

Everest Biotech c/o Abcore

405 Maple Street, Suite A106
Ramona,
CA 92065
USA

Inquiries:

info@everestbiotech.com

Sales:

usasales@everestbiotech.com

Tech support:

support@everestbiotech.com

Tel: 888-320-4628 (toll-free)

Fax: 888-841-9041

www.everestbiotech.com

**Research Use Only. Not for
diagnostic or therapeutic use.**

EB12544 - Goat Anti-BMP4 Antibody

Size: 100µg specific antibody in 200µl



Target Protein

Principal Names: BMP4, bone morphogenetic protein 4, BMP2B, BMP2B1, MCOPS6, OFC11, ZYME, BMP-2B, BMP-4, bone morphogenetic protein 2B

Official Symbol: BMP4

Accession Number(s): NP_001193.2

Human GeneID(s): [652](#)

Important Comments: The immunizing peptide represents the N terminus of the mature protein. Reported variants represent identical protein: NP_570911.2, NP_001193.2, NP_570912.2.

Immunogen

Peptide with sequence C-SPKHHSQRARK, from the internal region of the protein sequence according to NP_001193.2.

Please note the [peptide](#) is available for sale.

Purification and Storage

Purified from goat serum by ammonium sulphate precipitation followed by antigen affinity chromatography using the immunizing peptide.

Supplied at 0.5 mg/ml in Tris saline, 0.02% sodium azide, pH7.3 with 0.5% bovine serum albumin.

Aliquot and store at -20°C. Minimize freezing and thawing.

Applications Tested

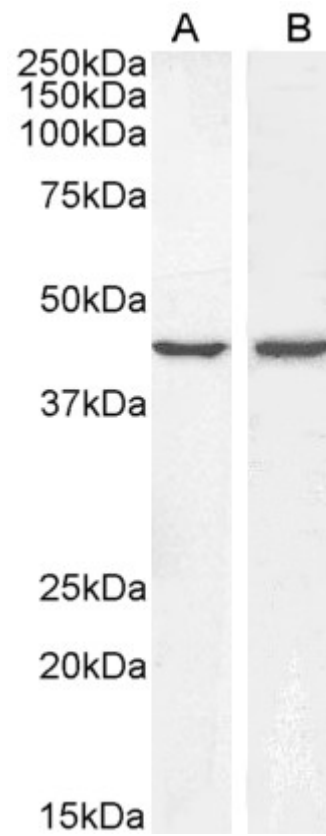
Peptide ELISA: antibody detection limit dilution 1:64000.

Western blot: Approx 40-45kDa band observed in lysates of cell lines A431 and HeLa (calculated MW of 46.6kDa according to NP_001193.2). Recommended concentration: 0.3-1µg/ml.

Species Reactivity

Tested: Human

Expected from sequence similarity: Human



EB12544 (0.3µg/ml) staining of A431 (A) and HeLa (B) lysate (35µg protein in RIPA buffer). Primary incubation was 1 hour. Detected by chemiluminescence.