



Everest Biotech Ltd
Cherwell Innovation Centre
77 Heyford Park
Upper Heyford
Oxfordshire
OX25 5HD, United Kingdom

everestbiotech.com

sales@everestbiotech.com

support@everestbiotech.com

Tel +44 1869 238326

Fax +44 1869 238327

**Research Use Only. Not for
diagnostic or therapeutic use.**

Storage: For long-term storage
keep aliquots at -20°C. (Store no
longer than 12 months at 4°C).
Minimize freezing and thawing.

EB05676 - Goat Anti-BOB1 / OCAB / OBF1 Antibody

Size: 100µg specific antibody in 200µl



Target Protein

Principal Names: OCAB, POU class 2 associating factor 1, POU domain, class 2, associating factor 1, OBF-1, POU2AF1, OBF1, BOB1

Official Symbol: POU2AF1

Accession Number(s): NP_006226.2

Human GeneID(s): [5450](#)

Non-Human GeneID(s): 18985 (mouse)

Immunogen

Peptide with sequence C-DAYALNHTLSVEGF, from the C Terminus of the protein sequence according to NP_006226.2.

Please note the [peptide](#) is available for sale.

Purification and Storage

Purified from goat serum by ammonium sulphate precipitation followed by antigen affinity chromatography using the immunizing peptide.

Supplied at 0.5 mg/ml in Tris saline, 0.02% sodium azide, pH7.3 with 0.5% bovine serum albumin.

Aliquot and store at -20°C. Minimize freezing and thawing.

Applications Tested

Peptide ELISA: antibody detection limit dilution 1:32000.

Western blot: Approx 30kDa band seen in mouse spleen lysate (Predicted MW of 28kDa according to NP_006226). Recommended for use at 1-3µg/ml.

Species Reactivity

Tested: Mouse

Expected from sequence similarity: Human, Mouse, Rat, Dog, Cow

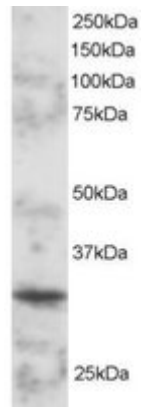
Background Reference

Strubin M, Newell JW, Matthias P.

OBF-1, a novel B cell-specific coactivator that stimulates immunoglobulin promoter activity through association with octamer-binding proteins.

Cell. 1995 Feb 10;80(3):497-506.

PMID: 7859290



EB05676 staining (2 μ g/ml) of mouse spleen lysate (RIPA buffer, 30 μ g total protein per lane). Primary incubated for 1 hour. Detected by western blot using chemiluminescence.