

## UK Office

### Everest Biotech Ltd

Cherwell Innovation Centre  
77 Heyford Park  
Upper Heyford  
Oxfordshire  
OX25 5HD  
UK

Enquiries:

[info@everestbiotech.com](mailto:info@everestbiotech.com)

Sales:

[sales@everestbiotech.com](mailto:sales@everestbiotech.com)

Tech support:

[support@everestbiotech.com](mailto:support@everestbiotech.com)

Tel: +44 (0)1869 238326

[www.everestbiotech.com](http://www.everestbiotech.com)

**Research Use Only. Not for  
diagnostic or therapeutic use.**

## EB09852 - Goat Anti-BOD1 Antibody

Size: 100µg specific antibody in 200µl



### Target Protein

**Principal Names:** biorientation defective 1, biorientation of chromosomes in cell division 1, FAM44B, family with sequence similarity 44, member B, BOD1

**Official Symbol:** BOD1

**Accession Number(s):** NP\_612378.1; NP\_001153123.1

**Human GeneID(s):** [91272](#)

**Non-Human GeneID(s):** 69556 (mouse), 287173 (rat)

**Important Comments:** This antibody is expected to recognize isoforms a and b (NP\_612378.1; NP\_001153123.1).

### Immunogen

Peptide with sequence C-NFVSTHLDKQE, from the internal region of the protein sequence according to NP\_612378.1; NP\_001153123.1.

Please note the [peptide](#) is available for sale.

### Purification and Storage

Purified from goat serum by ammonium sulphate precipitation followed by antigen affinity chromatography using the immunizing peptide.

Supplied at 0.5 mg/ml in Tris saline, 0.02% sodium azide, pH7.3 with 0.5% bovine serum albumin.

Aliquot and store at -20°C. Minimize freezing and thawing.

### Applications Tested

**Peptide ELISA:** antibody detection limit dilution 1:16000.

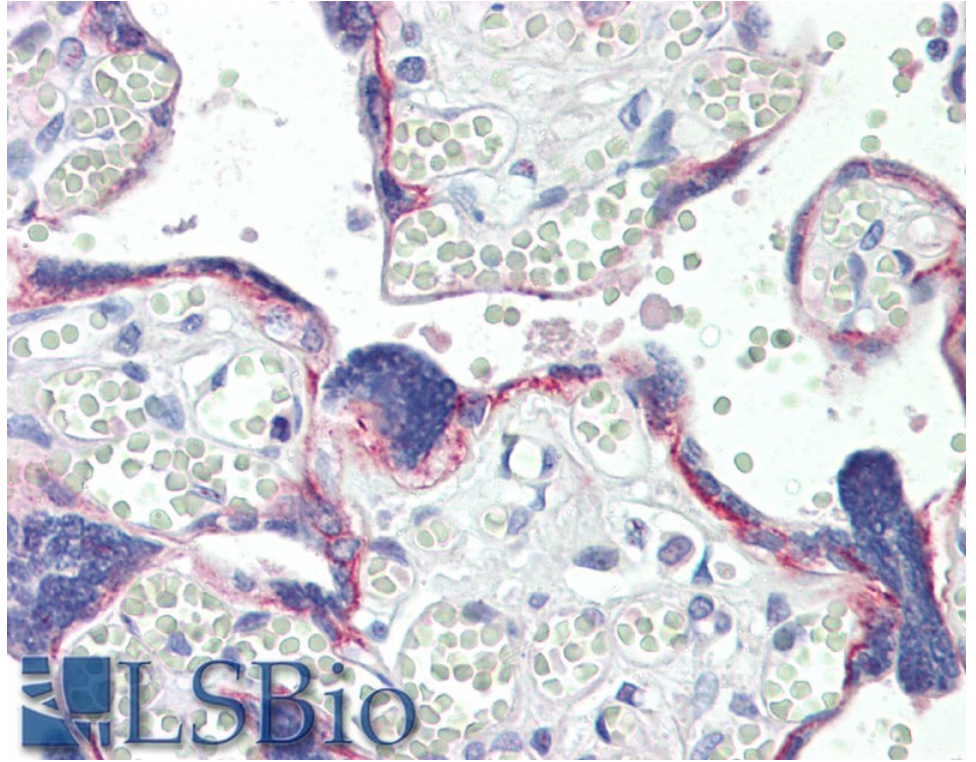
**Western blot:** Preliminary experiments gave an approx 37kDa band in Human Lung and Testis lysates after 1µg/ml antibody staining. Please note that currently we cannot find an explanation in the literature for the band we observe given the calculated size of 19.2kDa according to NP\_612378.1. The 37kDa band was successfully blocked by incubation with the immunizing peptide.

**IHC:** Paraffin embedded Human Placenta. Recommended concentration: 10µg/ml.

### Species Reactivity

**Tested:** Human

**Expected from sequence similarity:** Human, Mouse, Rat, Dog



EB09852 (10µg/ml) staining of paraffin embedded Human Placenta. Steamed antigen retrieval with citrate buffer pH 6, AP-staining.