



UK Office

Everest Biotech Ltd

Cherwell Innovation Centre
77 Heyford Park
Upper Heyford
Oxfordshire
OX25 5HD
UK

Enquiries:

info@everestbiotech.com

Sales:

sales@everestbiotech.com

Tech support:

support@everestbiotech.com

Tel: +44 (0)1869 238326

Fax: +44 (0)1869 238327

US Office

Everest Biotech c/o Abcore

405 Maple Street, Suite A106
Ramona,
CA 92065
USA

Inquiries:

info@everestbiotech.com

Sales:

usasales@everestbiotech.com

Tech support:

support@everestbiotech.com

Tel: 888-320-4628 (toll-free)

Fax: 888-841-9041

www.everestbiotech.com

**Research Use Only. Not for
diagnostic or therapeutic use.**

EB06074 - Goat Anti-BOULE / BOLL Antibody

Size: 100µg specific antibody in 200µl



Target Protein

Principal Names: BOLL, bol, boule-like (Drosophila), BOULE, boule

Official Symbol: BOLL

Accession Number(s): NP_932074.1; NP_149019.1

Human GeneID(s): [66037](#)

Important Comments: This antibody is expected to recognize both reported isoforms (NP_932074.1; NP_149019.1).

Immunogen

Peptide with sequence C-QPEPIKTVWSIH_Y, from the C Terminus of the protein sequence according to NP_932074.1; NP_149019.1.

Please note the [peptide](#) is available for sale.

Purification and Storage

Purified from goat serum by ammonium sulphate precipitation followed by antigen affinity chromatography using the immunizing peptide.

Supplied at 0.5 mg/ml in Tris saline, 0.02% sodium azide, pH7.3 with 0.5% bovine serum albumin.

Aliquot and store at -20°C. Minimize freezing and thawing.

Applications Tested

Peptide ELISA: antibody detection limit dilution 1:32000.

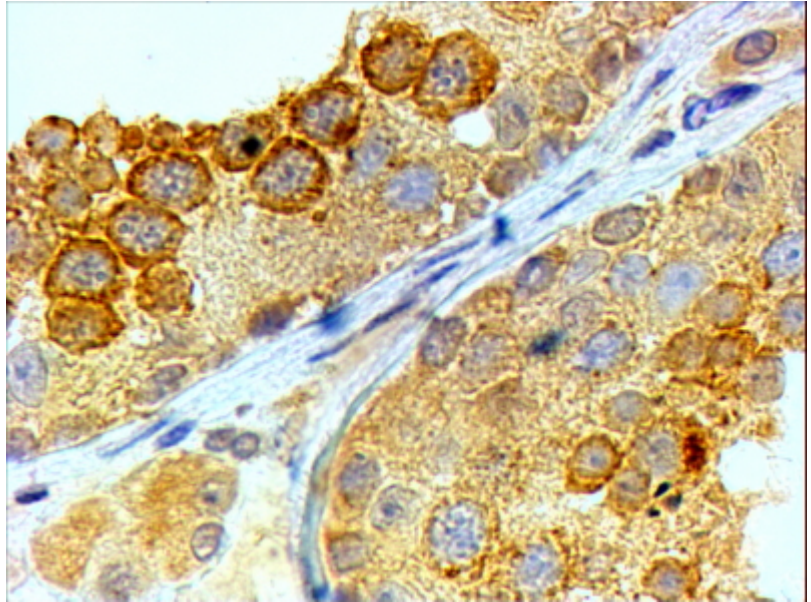
Western blot: Preliminary experiments gave an approx 22kDa band in Human Testis lysates after 1.5 µg/ml antibody staining. Please note that currently we cannot find an explanation in the literature for the band we observe given the calculated size of 32.6kDa according to NP_932074.1 and 31.3kDa according to NP_149019.1. The 22kDa band was successfully blocked by incubation with the immunizing peptide. However, literature reports a 36kDa band in Human and Mouse Testes (PMID: 11390979). Have any further splice variants/modified forms been reported?

IHC: In paraffin embedded Human Testis shows cytoplasm staining in spermatocytes, but not in spermatogonia. Recommended concentration, 4-6µg/ml.

Species Reactivity

Tested: Human

Expected from sequence similarity: Human, Dog, Cow



EB06074 (4 μ g/ml) staining of paraffin embedded Human Testis. Steamed antigen retrieval with citrate buffer pH 6, HRP-staining.