



UK Office

Everest Biotech Ltd

Cherwell Innovation Centre
77 Heyford Park
Upper Heyford
Oxfordshire
OX25 5HD
UK

Enquiries:

info@everestbiotech.com

Sales:

sales@everestbiotech.com

Tech support:

support@everestbiotech.com

Tel: +44 (0)1869 238326

Fax: +44 (0)1869 238327

US Office

Everest Biotech c/o Abcore

405 Maple Street, Suite A106
Ramona,
CA 92065
USA

Inquiries:

info@everestbiotech.com

Sales:

usasales@everestbiotech.com

Tech support:

support@everestbiotech.com

Tel: 888-320-4628 (toll-free)

Fax: 888-841-9041

www.everestbiotech.com

**Research Use Only. Not for
diagnostic or therapeutic use.**

EB11482 - Goat Anti-BPIFA1 / PLUNC Antibody

Size: 100µg specific antibody in 200µl



Target Protein

Principal Names: bA49G10.5, BPI fold containing family A, member 1, BPIFA1, ligand-binding protein RYA3, LPLUNC3, lung-specific protein X, LUNX, NASG, nasopharyngeal carcinoma-related protein, OTTHUMP00000030625, OTTHUMP00000030626, OTTHUMP00000030627, palate lung and nasal epithelium clone protein, palate, lung and nasal epithelium associated, PLUNC, protein Plunc, secretory protein in upper respiratory tracts, SPLUNC1, SPURT, tracheal epithelium enriched protein, tracheal epithelium-enriched protein, von Ebner protein HI

Official Symbol: BPIFA1

Accession Number(s): NP_057667.1

Human GeneID(s): [51297](#)

Important Comments: Reported variants represent identical protein: NP_057667.1, NP_001230122.1, NP_570913.1

Immunogen

Peptide with sequence RDKQERIHLVLGDC, from the internal region of the protein sequence according to NP_057667.1.

Please note the [peptide](#) is available for sale.

Purification and Storage

Purified from goat serum by ammonium sulphate precipitation followed by antigen affinity chromatography using the immunizing peptide.

Supplied at 0.5 mg/ml in Tris saline, 0.02% sodium azide, pH7.3 with 0.5% bovine serum albumin.

Aliquot and store at -20°C. Minimize freezing and thawing.

Applications Tested

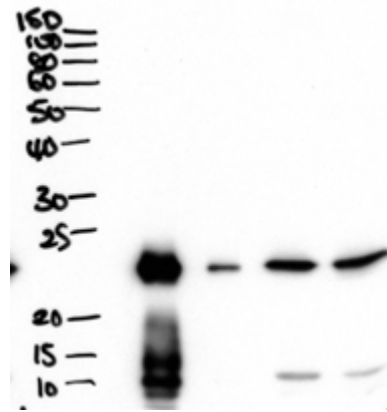
Peptide ELISA: antibody detection limit dilution 1:128000.

Western blot: Approx 26kDa band observed in secretions of Human primary airway cells in culture-and in Human Bronchoalveolar Lavage fluid (calculated MW of 26.7kDa according to NP_057667.1). Recommended concentration: 1-3µg/ml.

Species Reactivity

Tested: Human

Expected from sequence similarity: Human



EB11482 (2 μ g/ml) staining of secretions from Human primary airway cells in culture (lanes 1 and 2), and in Human Bronchoalveolar Lavage fluid (lanes 3 and 4) . Data obtained from Dr. C Bingle, AURM, University of Sheffield, UK. Primary incubation was 1 hour. Detected by chemiluminescence.