



UK Office

Everest Biotech Ltd

Cherwell Innovation Centre
77 Heyford Park
Upper Heyford
Oxfordshire
OX25 5HD
UK

Enquiries:

info@everestbiotech.com

Sales:

sales@everestbiotech.com

Tech support:

support@everestbiotech.com

Tel: +44 (0)1869 238326

Fax: +44 (0)1869 238327

US Office

Everest Biotech c/o Abcore

405 Maple Street, Suite A106
Ramona,
CA 92065
USA

Inquiries:

info@everestbiotech.com

Sales:

usasales@everestbiotech.com

Tech support:

support@everestbiotech.com

Tel: 888-320-4628 (toll-free)

Fax: 888-841-9041

www.everestbiotech.com

**Research Use Only. Not for
diagnostic or therapeutic use.**

EB05200 - Goat Anti-BPOZ / ABTB1 Antibody

Size: 100µg specific antibody in 200µl



Target Protein

Principal Names: ABTB1, BPOZ, EF1ABP, MGC20585, ankyrin repeat and BTB (POZ) domain containing 1, elongation factor 1A binding protein, Btb3, PP2259

Official Symbol: ABTB1

Accession Number(s): NP_115937.1; NP_742024.1

Human GenelD(s): [80325](#)

Non-Human GenelD(s): 80283 (mouse)

Important Comments: This antibody is expected to recognise all reported isoforms (NP_115937.1; NP_742024.1; NP_742025.1).

Immunogen

Peptide with sequence RALEDLLVSI GLDC, from the C Terminus of the protein sequence according to NP_115937.1; NP_742024.1.

Please note the [peptide](#) is available for sale.

Purification and Storage

Purified from goat serum by ammonium sulphate precipitation followed by antigen affinity chromatography using the immunizing peptide.

Supplied at 0.5 mg/ml in Tris saline, 0.02% sodium azide, pH7.3 with 0.5% bovine serum albumin.

Aliquot and store at -20°C. Minimize freezing and thawing.

Applications Tested

Peptide ELISA: antibody detection limit dilution 1:32000.

Western blot: Approx 38kDa band observed in Human Heart lysates, and approx. 50kDa in preliminary testing of MCF7 cell lysate (calculated MW of 37.6kDa according to NP_115937.1 and 54kDa according to ; NP_742024.1). An additional band was also consistently observed at 65-70kDa. and was successfully blocked by incubation with the immunizing peptide. Recommended concentration: 1-3µg/ml. Primary incubation 1 hour at room temperature.

IHC: Paraffin embedded Human Heart and Brain (Cerebellum). Recommended concentration: 3.75µg/ml.

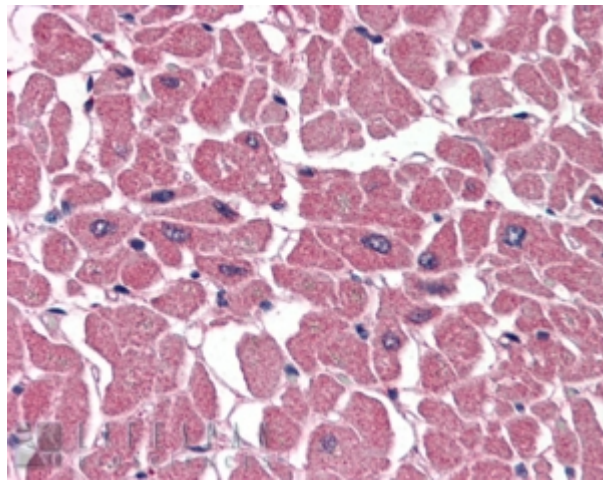
Species Reactivity

Tested: Human

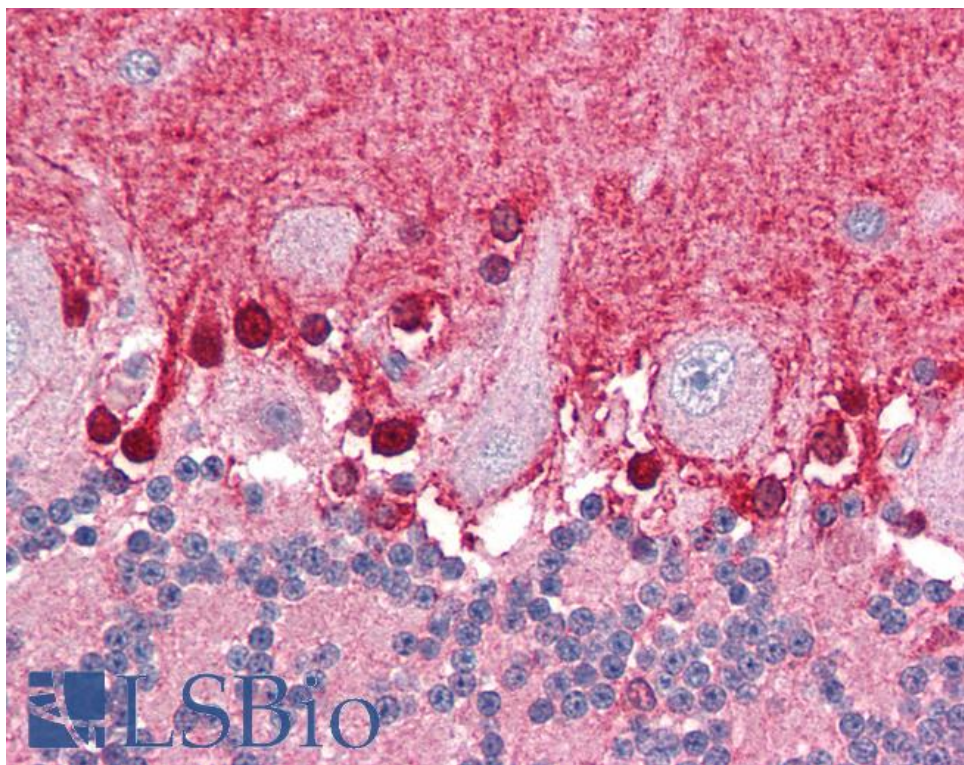
Expected from sequence similarity: Human, Mouse, Rat, Dog



EB05200 staining (1 μ g/ml) of Human Heart lysate (RIPA buffer, 35 μ g total protein per lane). Detected by chemiluminescence.



EB05200 (3.75 μ g/ml) staining of paraffin embedded Human Heart. Steamed antigen retrieval with citrate buffer pH 6, AP-staining.



EB05200 (3.75µg/ml) staining of paraffin embedded Human Cerebellum. Steamed antigen retrieval with citrate buffer pH 6, AP-staining.