



UK Office

Everest Biotech Ltd

Cherwell Innovation Centre
77 Heyford Park
Upper Heyford
Oxfordshire
OX25 5HD
UK

Enquiries:

info@everestbiotech.com

Sales:

sales@everestbiotech.com

Tech support:

support@everestbiotech.com

Tel: +44 (0)1869 238326

Fax: +44 (0)1869 238327

US Office

Everest Biotech c/o Abcore

405 Maple Street, Suite A106
Ramona,
CA 92065
USA

Inquiries:

info@everestbiotech.com

Sales:

usasales@everestbiotech.com

Tech support:

support@everestbiotech.com

Tel: 888-320-4628 (toll-free)

Fax: 888-841-9041

www.everestbiotech.com

**Research Use Only. Not for
diagnostic or therapeutic use.**

EB08800 - Goat Anti-Bradykinin receptor B1 Antibody

Size: 100µg specific antibody in 200µl



Target Protein

Principal Names: bradykinin receptor B1, BDKRB1, B1BKR, B1R, BKB1R, BKR1, BRADYB1, BK-1 receptor, bradykinin B1 receptor, bradykinin receptor 1

Official Symbol: BDKRB1

Accession Number(s): NP_000701.2

Human GeneID(s): [623](#)

Immunogen

Peptide with sequence KVVELYKQCTPK, from the internal region of the protein sequence according to NP_000701.2.

Please note the [peptide](#) is available for sale.

Purification and Storage

Purified from goat serum by ammonium sulphate precipitation followed by antigen affinity chromatography using the immunizing peptide.

Supplied at 0.5 mg/ml in Tris saline, 0.02% sodium azide, pH7.3 with 0.5% bovine serum albumin.

Aliquot and store at -20°C. Minimize freezing and thawing.

Applications Tested

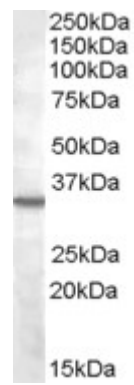
Peptide ELISA: antibody detection limit dilution 1:1000.

Western blot: Approx 35kDa band observed in lysates of cell lines Daudi, K562 and U937 calculated MW of 40.5kDa according to NP_000701.2). This molecular weight is routinely observed by other sources. Recommended concentration: 2-4µg/ml.

Species Reactivity

Tested: Human

Expected from sequence similarity: Human



EB08800 (2 μ g/ml) staining of K562 lysate (35 μ g protein in RIPA buffer). Primary incubation was 1 hour.
Detected by chemiluminescence.