

## UK Office

### Everest Biotech Ltd

Cherwell Innovation Centre  
77 Heyford Park  
Upper Heyford  
Oxfordshire  
OX25 5HD  
UK

Enquiries:

[info@everestbiotech.com](mailto:info@everestbiotech.com)

Sales:

[sales@everestbiotech.com](mailto:sales@everestbiotech.com)

Tech support:

[support@everestbiotech.com](mailto:support@everestbiotech.com)

Tel: +44 (0)1869 238326

[www.everestbiotech.com](http://www.everestbiotech.com)

**Research Use Only. Not for  
diagnostic or therapeutic use.**

## EB09170 - Goat Anti-BRD4 Antibody

Size: 100µg specific antibody in 200µl



### Target Protein

**Principal Names:** BRD4, bromodomain containing 4, CAP, HUNK1, HUNKI, MCAP, bromodomain-containing 4, bromodomain-containing protein 4, chromosome-associated protein

**Official Symbol:** BRD4

**Accession Number(s):** NP\_490597.1; NP\_055114.1

**Human GeneID(s):** [23476](#)

**Important Comments:** This antibody is expected to recognize both reported isoforms (NP\_490597.1; NP\_055114.1).

### Immunogen

Peptide with sequence C-PETSNPNKPKRQTNQ, from the internal region (near N Terminus) of the protein sequence according to NP\_490597.1; NP\_055114.1.

Please note the [peptide](#) is available for sale.

### Purification and Storage

Purified from goat serum by ammonium sulphate precipitation followed by antigen affinity chromatography using the immunizing peptide.

Supplied at 0.5 mg/ml in Tris saline, 0.02% sodium azide, pH7.3 with 0.5% bovine serum albumin.

Aliquot and store at -20°C. Minimize freezing and thawing.

### Applications Tested

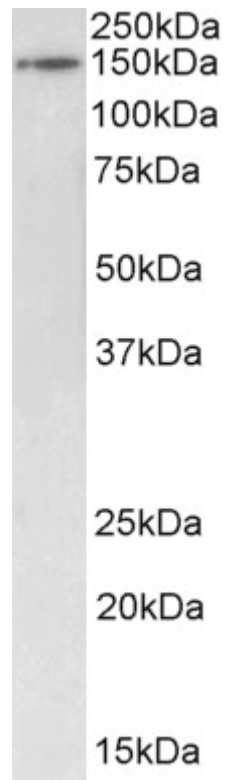
**Peptide ELISA:** antibody detection limit dilution 1:8000.

**Western blot:** Approx 150kDa band observed in Mouse Testis lysates (calculated MW of 155.8kDa according to Mouse NP\_065254.3). Recommended concentration: 0.5 -2µg/ml. Primary incubation was 1 hour.

### Species Reactivity

**Tested:** Mouse

**Expected from sequence similarity:** Human, Mouse, Rat, Dog



EB09170 (1 $\mu$ g/ml) staining of Mouse Testes lysate (35 $\mu$ g protein in RIPA buffer). Detected by chemiluminescence.