



UK Office

Everest Biotech Ltd

Cherwell Innovation Centre
77 Heyford Park
Upper Heyford
Oxfordshire
OX25 5HD
UK

Enquiries:

info@everestbiotech.com

Sales:

sales@everestbiotech.com

Tech support:

support@everestbiotech.com

Tel: +44 (0)1869 238326

Fax: +44 (0)1869 238327

US Office

Everest Biotech c/o Abcore

405 Maple Street, Suite A106
Ramona,
CA 92065
USA

Inquiries:

info@everestbiotech.com

Sales:

usasales@everestbiotech.com

Tech support:

support@everestbiotech.com

Tel: 888-320-4628 (toll-free)

Fax: 888-841-9041

www.everestbiotech.com

**Research Use Only. Not for
diagnostic or therapeutic use.**

EB06353 - Goat Anti-BRG1 / SMARCA4 Antibody

Size: 100µg specific antibody in 200µl



Target Protein

Principal Names: SMARCA4, BRG1, BAF190, SNF2L4, SNF2LB, hSNF2B, hSNF2b, SNF2-BETA, SWI/SNF related, matrix associated, actin dependent regulator of chromatin, subfamily a, member 4, SNF2-beta, SNF2-like 4, nuclear protein GRB1, brahma protein-like 1, BRM/SWI2-related gene 1, homeotic gene regulator, sucrose nonfermenting-like 4, mitotic growth and transcription activator, global transcription activator homologous sequence

Official Symbol: SMARCA4

Accession Number(s): NP_001122321.1; NP_003063.2; NP_001122317.1; NP_001122318.1; NP_001122319.1; NP_001122320.1

Human GeneID(s): [6597](#)

Non-Human GeneID(s): 20586 (mouse), 171379 (rat)

Important Comments: This antibody is expected to recognize all reported isoforms (NP_001122321.1; NP_003063.2; NP_001122317.1; NP_001122318.1; NP_001122319.1; NP_001122320.1). Reported variants NP_003063.2 and NP_001122316.1 represent identical protein.

Immunogen

Peptide with sequence STDPPLGGTPRP-C, from the N Terminus of the protein sequence according to NP_001122321.1; NP_003063.2; NP_001122317.1; NP_001122318.1; NP_001122319.1; NP_001122320.1.

Please note the [peptide](#) is available for sale.

Purification and Storage

Purified from goat serum by ammonium sulphate precipitation followed by antigen affinity chromatography using the immunizing peptide.

Supplied at 0.5 mg/ml in Tris saline, 0.02% sodium azide, pH7.3 with 0.5% bovine serum albumin.

Aliquot and store at -20°C. Minimize freezing and thawing.

Applications Tested

Peptide ELISA: antibody detection limit dilution 1:16000.

IHC: Paraffin embedded Human Small Intestine, Tonsil and Prostate. Recommended concentration: 3.75µg/ml.

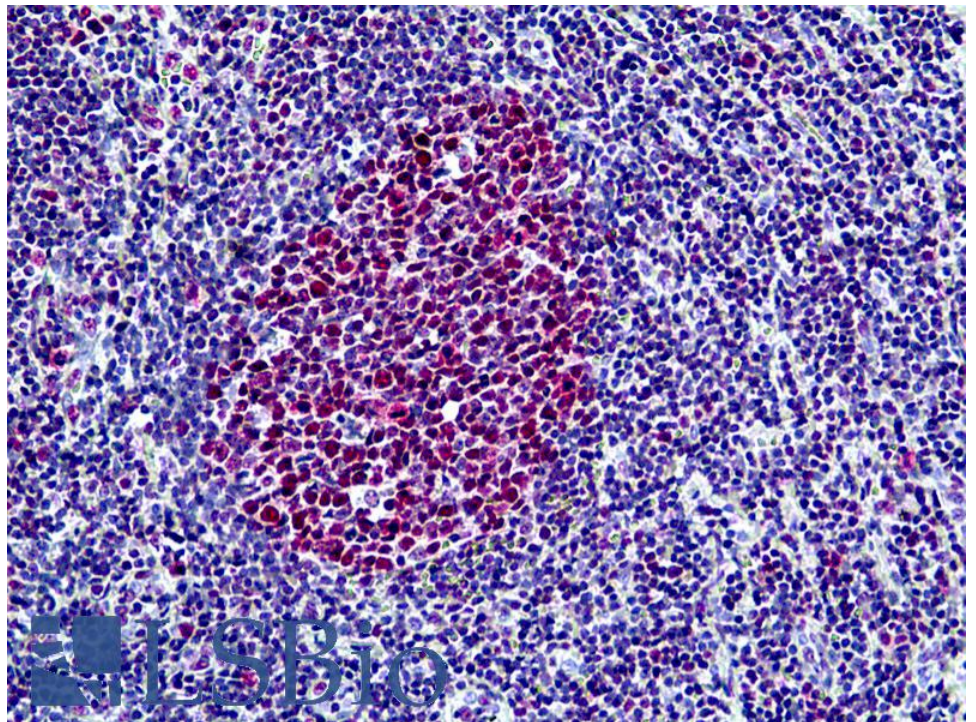
Species Reactivity

Tested: Human

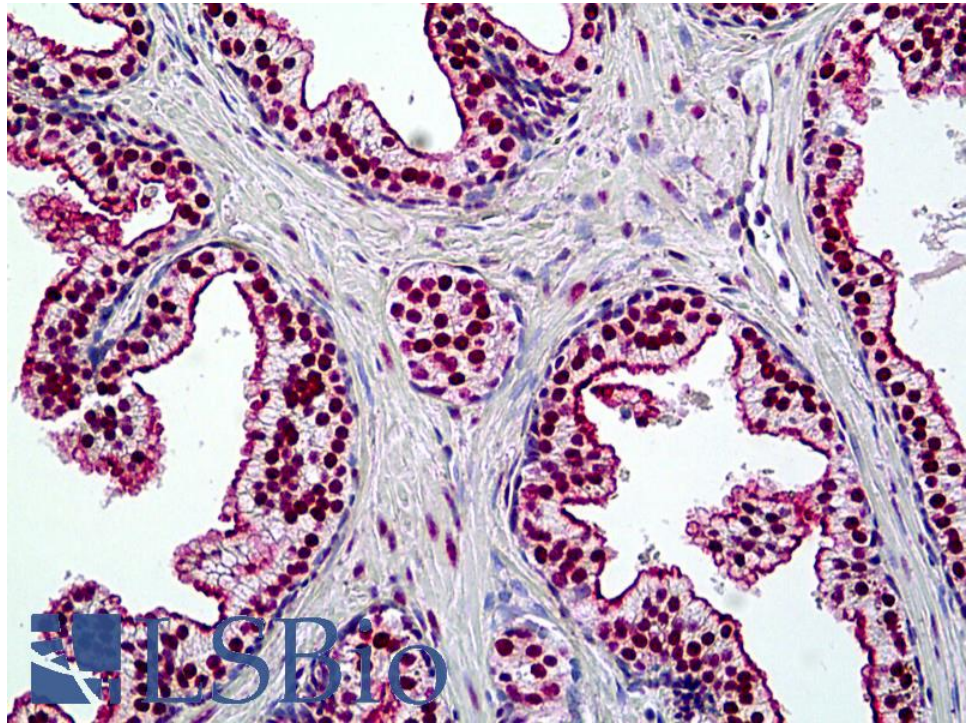
Expected from sequence similarity: Human, Mouse, Rat, Dog



EB06353 (3.75µg/ml) staining of paraffin embedded Human Small Intestine. Steamed antigen retrieval with citrate buffer pH 6, AP-staining.



EB06353 (3.75µg/ml) staining of paraffin embedded Human Tonsil. Steamed antigen retrieval with citrate buffer pH 6, AP-staining.



EB06353 (3.75µg/ml) staining of paraffin embedded Human Prostate. Steamed antigen retrieval with citrate buffer pH 6, AP-staining.