



UK Office

Everest Biotech Ltd

Cherwell Innovation Centre
77 Heyford Park
Upper Heyford
Oxfordshire
OX25 5HD
UK

Enquiries:

info@everestbiotech.com

Sales:

sales@everestbiotech.com

Tech support:

support@everestbiotech.com

Tel: +44 (0)1869 238326

Fax: +44 (0)1869 238327

US Office

Everest Biotech c/o Abcore

405 Maple Street, Suite A106
Ramona,
CA 92065
USA

Inquiries:

info@everestbiotech.com

Sales:

usasales@everestbiotech.com

Tech support:

support@everestbiotech.com

Tel: 888-320-4628 (toll-free)

Fax: 888-841-9041

www.everestbiotech.com

**Research Use Only. Not for
diagnostic or therapeutic use.**

EB06199 - Goat Anti-BTRC / FWD1 Antibody

Size: 100µg specific antibody in 200µl



Target Protein

Principal Names: BTRC, beta-transducin repeat containing, RP11-529I10.2, BETA-TRCP, FBW1A, FBXW1, FBXW1A, FWD1, MGC4643, bTrCP, bTrCP1, betaTrCP, E3RSIkappaB, F-box and WD repeats protein beta-TrCP, F-box and WD-repeat protein 1B, F-box/WD repeat-containing protein 1A, OTTHUMP00000020314, OTTHUMP00000020315, beta-TrCP1, plkappaBalpha-E3 receptor subunit

Official Symbol: BTRC

Accession Number(s): NP_378663.1; NP_003930.1; NP_001243785.1

Human GeneID(s): [8945](#)

Non-Human GeneID(s): 12234 (mouse), 361765 (rat)

Important Comments: This antibody is expected to recognise both reported isoforms (NP_378663.1; NP_003930.1).

Immunogen

Peptide with sequence DPAAVLQEKALK-C, from the N Terminus of the protein sequence according to NP_378663.1; NP_003930.1; NP_001243785.1.

Please note the [peptide](#) is available for sale.

Purification and Storage

Purified from goat serum by ammonium sulphate precipitation followed by antigen affinity chromatography using the immunizing peptide.

Supplied at 0.5 mg/ml in Tris saline, 0.02% sodium azide, pH7.3 with 0.5% bovine serum albumin.

Aliquot and store at -20°C. Minimize freezing and thawing.

Applications Tested

Peptide ELISA: antibody detection limit dilution 1:128000.

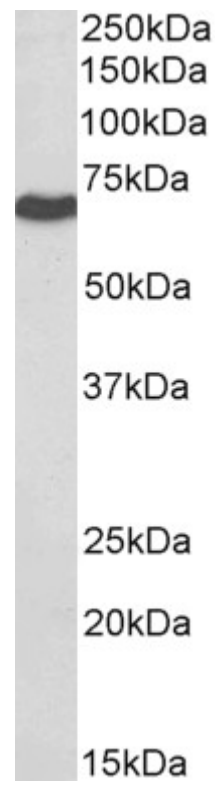
Western blot: Approx 65kDa band observed in nuclear lysates of cell line HeLa (calculated MW of 65kDa according to NP_003930.1 and 68.5kDa according to NP_001243785.1. Recommended concentration: 1-3µg/ml. Primary incubation was 1 hour.

IHC: Paraffin embedded Human Heart. Recommended concentration: 7.5µg/ml.

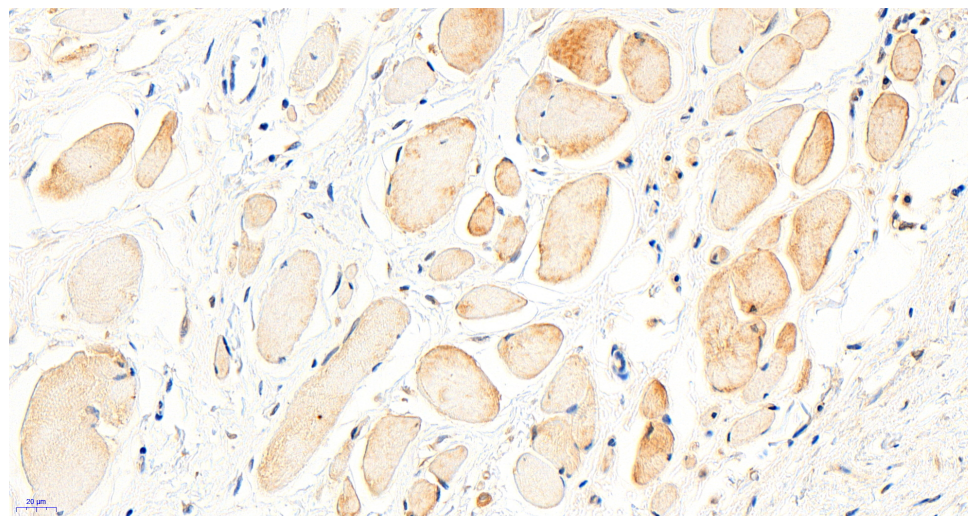
Species Reactivity

Tested: Human

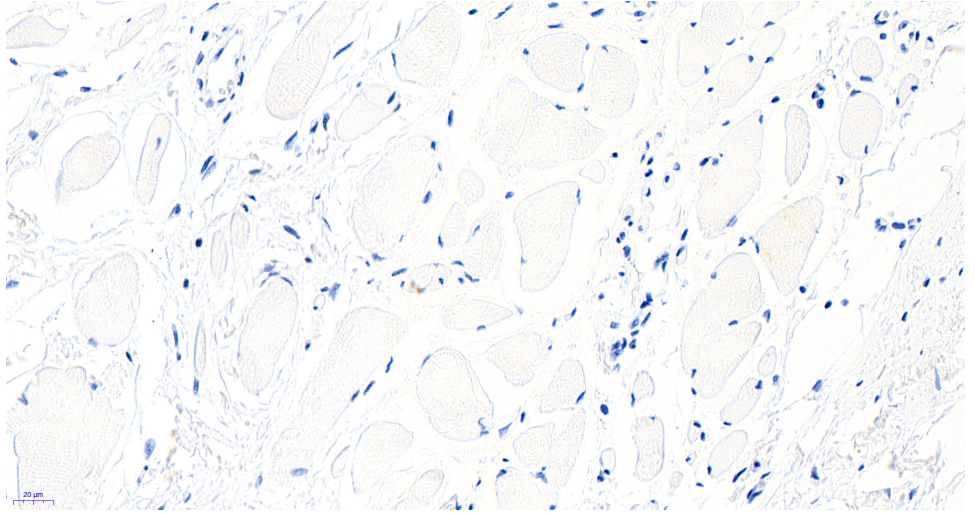
Expected from sequence similarity: Human, Mouse, Rat, Pig, Cow



EB06199 (1 μ g/ml) staining of Nuclear lysates of cell line HeLa (35 μ g protein in RIPA buffer). Detected by chemiluminescence.



EB06199 (7.5 μ g/ml) staining of paraffin embedded Human Heart. Heat induced antigen retrieval with citrate buffer pH 6, HRP-staining.



EB06199 Negative Control showing staining of paraffin embedded Human Heart, with no primary antibody.