



UK Office

Everest Biotech Ltd

Cherwell Innovation Centre
77 Heyford Park
Upper Heyford
Oxfordshire
OX25 5HD
UK

Enquiries:

info@everestbiotech.com

Sales:

sales@everestbiotech.com

Tech support:

support@everestbiotech.com

Tel: +44 (0)1869 238326

Fax: +44 (0)1869 238327

US Office

Everest Biotech c/o Abcore

405 Maple Street, Suite A106
Ramona,
CA 92065
USA

Inquiries:

info@everestbiotech.com

Sales:

usasales@everestbiotech.com

Tech support:

support@everestbiotech.com

Tel: 888-320-4628 (toll-free)

Fax: 888-841-9041

www.everestbiotech.com

**Research Use Only. Not for
diagnostic or therapeutic use.**

EB07620 - Goat Anti-C14orf169 / NO66 Antibody

Size: 100µg specific antibody in 200µl



Target Protein

Principal Names: C14orf169, NO66, chromosome 14 open reading frame 169, FLJ21802, MAPJD

Official Symbol: RIOX1

Accession Number(s): NP_078920.2

Human GeneID(s): [79697](#)

Non-Human GeneID(s): 71952 (mouse)

Immunogen

Peptide with sequence C-GAQHSDSKDPR, from the internal region of the protein sequence according to NP_078920.2.

Please note the [peptide](#) is available for sale.

Purification and Storage

Purified from goat serum by ammonium sulphate precipitation followed by antigen affinity chromatography using the immunizing peptide.

Supplied at 0.5 mg/ml in Tris saline, 0.02% sodium azide, pH7.3 with 0.5% bovine serum albumin.

Aliquot and store at -20°C. Minimize freezing and thawing.

Applications Tested

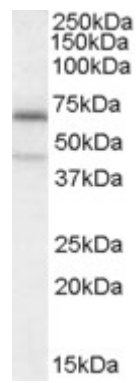
Peptide ELISA: antibody detection limit dilution 1:64000.

Western blot: Approx 70kDa band observed in lysates of cell line A431 (calculated MW of 71.1kDa according to NP_078920.2). Recommended concentration: 0.3-1µg/ml. An additional band of unknown identity was also consistently observed at 45kDa. This band was successfully blocked by incubation with the immunising peptide.

Species Reactivity

Tested: Human

Expected from sequence similarity: Human, Mouse, Rat



EB07620 (0.3 μ g/ml) staining of A431 cell lysate (35 μ g protein in RIPA buffer). Primary incubation was 1 hour.
Detected by chemiluminescence.