



UK Office

Everest Biotech Ltd

Cherwell Innovation Centre
77 Heyford Park
Upper Heyford
Oxfordshire
OX25 5HD
UK

Enquiries:

info@everestbiotech.com

Sales:

sales@everestbiotech.com

Tech support:

support@everestbiotech.com

Tel: +44 (0)1869 238326

www.everestbiotech.com

**Research Use Only. Not for
diagnostic or therapeutic use.**

EB12362 - Goat Anti-C9 (aa205-216) Antibody

Size: 100µg specific antibody in 200µl



Target Protein

Principal Names: C9, complement component 9, complement component C9

Official Symbol: C9

Accession Number(s): NP_001728.1

Human GeneID(s): [735](#)

Immunogen

Peptide with sequence C-ETKGEKNFRTEH, from the internal region of the protein sequence according to NP_001728.1.

Please note the [peptide](#) is available for sale.

Purification and Storage

Purified from goat serum by ammonium sulphate precipitation followed by antigen affinity chromatography using the immunizing peptide.

Supplied at 0.5 mg/ml in Tris saline, 0.02% sodium azide, pH7.3 with 0.5% bovine serum albumin.

Aliquot and store at -20°C. Minimize freezing and thawing.

Applications Tested

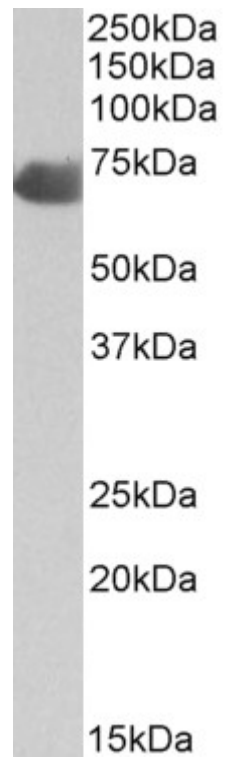
Peptide ELISA: antibody detection limit dilution 1:4000.

Western blot: Approx 70kDa band observed in Human Placenta, Kidney and Liver lysates (calculated MW of 63.2kDa according to NP_001728.1). The observed molecular weight corresponds to the glycosylated form. Recommended concentration: 1-3µg/ml.

Species Reactivity

Tested: Human

Expected from sequence similarity: Human



EB12362 (2 μ g/ml) staining of Human Placenta lysate (35 μ g protein in RIPA buffer). Primary incubation was 1 hour. Detected by chemiluminescence.