



UK Office

Everest Biotech Ltd

Cherwell Innovation Centre
77 Heyford Park
Upper Heyford
Oxfordshire
OX25 5HD
UK

Enquiries:

info@everestbiotech.com

Sales:

sales@everestbiotech.com

Tech support:

support@everestbiotech.com

Tel: +44 (0)1869 238326

Fax: +44 (0)1869 238327

US Office

Everest Biotech c/o Abcore

405 Maple Street, Suite A106
Ramona,
CA 92065
USA

Inquiries:

info@everestbiotech.com

Sales:

usasales@everestbiotech.com

Tech support:

support@everestbiotech.com

Tel: 888-320-4628 (toll-free)

Fax: 888-841-9041

www.everestbiotech.com

**Research Use Only. Not for
diagnostic or therapeutic use.**

EB05578 - Goat Anti-CABP1 Antibody

Size: 100µg specific antibody in 200µl



Target Protein

Principal Names: CABP1, CALBRAIN, HCALB_BR, calcium binding protein 1 (calbrain), calbrain, calcium binding protein 5, calcium binding protein 1 calbrain, caldendrin

Official Symbol: CABP1

Accession Number(s): NP_112482.1; NP_004267.2

Human GeneID(s): [9478](#)

Important Comments: This antibody is expected to recognise both Human isoforms.

Immunogen

Peptide with sequence GNCVKYPLRNLS, from the N Terminus of the protein sequence according to NP_112482.1; NP_004267.2.

Please note the [peptide](#) is available for sale.

Purification and Storage

Purified from goat serum by ammonium sulphate precipitation followed by antigen affinity chromatography using the immunizing peptide.

Supplied at 0.5 mg/ml in Tris saline, 0.02% sodium azide, pH7.3 with 0.5% bovine serum albumin.

Aliquot and store at -20°C. Minimize freezing and thawing.

Applications Tested

Peptide ELISA: antibody detection limit dilution 1:32000.

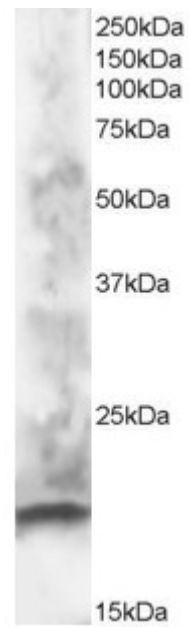
Western blot: Approx 20kDa band seen in human brain lysate (predicted MW 19kDa).

Recommended for use at 0.5-2µg/ml.

Species Reactivity

Tested: Human

Expected from sequence similarity: Human



EB05578 staining (1 μ g/ml) of human brain lysate (RIPA buffer, 30 μ g total protein per lane). Primary incubated for 1 hour. Detected by western blot using chemiluminescence.