



UK Office

Everest Biotech Ltd

Cherwell Innovation Centre
77 Heyford Park
Upper Heyford
Oxfordshire
OX25 5HD
UK

Enquiries:

info@everestbiotech.com

Sales:

sales@everestbiotech.com

Tech support:

support@everestbiotech.com

Tel: +44 (0)1869 238326

Fax: +44 (0)1869 238327

US Office

Everest Biotech c/o Abcore

405 Maple Street, Suite A106
Ramona,
CA 92065
USA

Inquiries:

info@everestbiotech.com

Sales:

usasales@everestbiotech.com

Tech support:

support@everestbiotech.com

Tel: 888-320-4628 (toll-free)

Fax: 888-841-9041

www.everestbiotech.com

**Research Use Only. Not for
diagnostic or therapeutic use.**

EB07832 - Goat Anti-CACNA2D1 Antibody

Size: 100µg specific antibody in 200µl



Target Protein

Principal Names: CACNA2D1, calcium channel, voltage-dependent, alpha 2/delta subunit 1, CACNA2, CACNL2A, CCHL2A, MHS3, H_DJ0560O14.1, WUGSC:H_DJ0560O14.1, calcium channel, L type, alpha 2 polypeptide, dihydropyridine-sensitive L-type, calcium channel alpha-2/delta subunit

Official Symbol: CACNA2D1

Accession Number(s): NP_000713.2

Human GeneID(s): [781](#)

Non-Human GeneID(s): 12293 (mouse), 25399 (rat)

Immunogen

Peptide with sequence C-QEIFNKYNKDKKVR, from the internal region of the protein sequence according to NP_000713.2.

Please note the [peptide](#) is available for sale.

Purification and Storage

Purified from goat serum by ammonium sulphate precipitation followed by antigen affinity chromatography using the immunizing peptide.

Supplied at 0.5 mg/ml in Tris saline, 0.02% sodium azide, pH7.3 with 0.5% bovine serum albumin.

Aliquot and store at -20°C. Minimize freezing and thawing.

Applications Tested

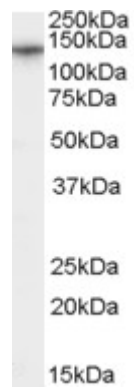
Peptide ELISA: antibody detection limit dilution 1:16000.

Western blot: Approx 140kDa band observed in Human Brain (Cerebellum) lysates (calculated MW of 123kDa according to NP_000713.2). Recommended concentration: 0.03-0.1µg/ml. Customer found it not suitable on Mouse and Rat protein.

Species Reactivity

Tested: Human

Expected from sequence similarity: Human



EB07832 (0.03 μ g/ml) staining of Human Brain (Cerebellum) lysate (35 μ g protein in RIPA buffer). Primary incubation was 1 hour. Detected by chemiluminescence.