



## UK Office

### Everest Biotech Ltd

Cherwell Innovation Centre  
77 Heyford Park  
Upper Heyford  
Oxfordshire  
OX25 5HD  
UK

Enquiries:

[info@everestbiotech.com](mailto:info@everestbiotech.com)

Sales:

[sales@everestbiotech.com](mailto:sales@everestbiotech.com)

Tech support:

[support@everestbiotech.com](mailto:support@everestbiotech.com)

Tel: +44 (0)1869 238326

Fax: +44 (0)1869 238327

## US Office

### Everest Biotech c/o Abcore

405 Maple Street, Suite A106  
Ramona,  
CA 92065  
USA

Inquiries:

[info@everestbiotech.com](mailto:info@everestbiotech.com)

Sales:

[usasales@everestbiotech.com](mailto:usasales@everestbiotech.com)

Tech support:

[support@everestbiotech.com](mailto:support@everestbiotech.com)

Tel: 888-320-4628 (toll-free)

Fax: 888-841-9041

[www.everestbiotech.com](http://www.everestbiotech.com)

**Research Use Only. Not for  
diagnostic or therapeutic use.**

## EB07531 - Goat Anti-CACNB4 (internal) Antibody

Size: 100µg specific antibody in 200µl



### Target Protein

**Principal Names:** CACNB4, calcium channel, voltage-dependent, beta 4 subunit, CAB4, CACNLB4, EA5, EJM, dihydropyridine-sensitive L-type, calcium channel beta-4 subunit, voltage dependent calcium channel beta 4 subunit

**Official Symbol:** CACNB4

**Accession Number(s):** NP\_001005747.1; NP\_000717.2; NP\_001005746.1

**Human GeneID(s):** [785](#)

**Non-Human GeneID(s):** 12298 (mouse), 58942 (rat)

**Important Comments:** This antibody is expected to recognise all three reported isoforms (NP\_001005747.1; NP\_000717.2; NP\_001005746.1).

### Immunogen

Peptide with sequence C-DYPDSYQDTYKPH, from the internal region (near the C Terminus) of the protein sequence according to NP\_001005747.1; NP\_000717.2; NP\_001005746.1.

Please note the [peptide](#) is available for sale.

### Purification and Storage

Purified from goat serum by ammonium sulphate precipitation followed by antigen affinity chromatography using the immunizing peptide.

Supplied at 0.5 mg/ml in Tris saline, 0.02% sodium azide, pH7.3 with 0.5% bovine serum albumin.

Aliquot and store at -20°C. Minimize freezing and thawing.

### Applications Tested

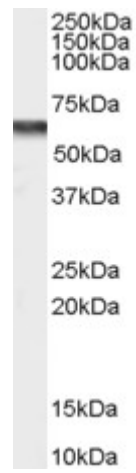
**Peptide ELISA:** antibody detection limit dilution 1:4000.

**Western blot:** Approx 55-60kDa band observed in Human Bone Marrow lysates (calculated MW of 54.7kDa according to NP\_001005747.1 and 58.2kDa according to NP\_000717.2). Recommended concentration: 0.2-0.6 µg/ml.

### Species Reactivity

**Tested:** Human

**Expected from sequence similarity:** Human, Mouse, Rat, Dog



EB07531 (0.2 $\mu$ g/ml) staining of Human Bone Marrow lysate (35 $\mu$ g protein in RIPA buffer). Primary incubation was 1 hour. Detected by chemiluminescence.