

UK Office

Everest Biotech Ltd

Cherwell Innovation Centre
77 Heyford Park
Upper Heyford
Oxfordshire
OX25 5HD
UK

Enquiries:

info@everestbiotech.com

Sales:

sales@everestbiotech.com

Tech support:

support@everestbiotech.com

Tel: +44 (0)1869 238326

www.everestbiotech.com

**Research Use Only. Not for
diagnostic or therapeutic use.**

EB10245 - Goat Anti-CADM1 Antibody

Size: 100µg specific antibody in 200µl



Target Protein

Principal Names: BL2, cell adhesion molecule 1, DKFZp686F1789, IGSF4, IGSF4A, MGC149785, MGC51880, NECL2, Necl-2, RA175, sglIGSF, ST17, SYNCAM, synCAM1, TSLC1, TSLC1/Nectin-like 2/IGSF4, CADM1

Official Symbol: CADM1

Accession Number(s): NP_055148.3; NP_001091987.1

Human GeneID(s): [23705](#)

Non-Human GeneID(s): 54725 (mouse), 363058 (rat)

Important Comments: This antibody is expected to recognize both reported isoforms (NP_055148.3; NP_001091987.1).

Immunogen

Peptide with sequence C-EVQYKPQVHIQ, from the internal region of the protein sequence according to NP_055148.3; NP_001091987.1.

Please note the [peptide](#) is available for sale.

Purification and Storage

Purified from goat serum by ammonium sulphate precipitation followed by antigen affinity chromatography using the immunizing peptide.

Supplied at 0.5 mg/ml in Tris saline, 0.02% sodium azide, pH7.3 with 0.5% bovine serum albumin.

Aliquot and store at -20°C. Minimize freezing and thawing.

Applications Tested

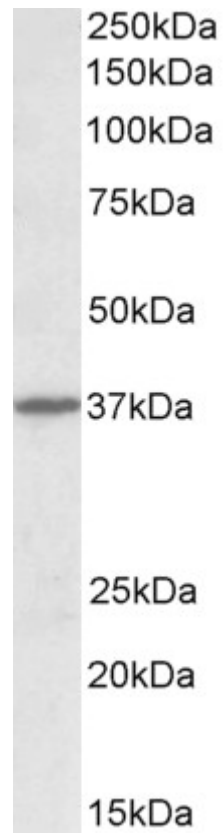
Peptide ELISA: antibody detection limit dilution 1:8000.

Western blot: Approx 37kDa band observed in Human and Mouse Brain lysates (calculated MW of 36.9kDa according to the reported isoform 2 Q9BY67-2 in UniprotKB).
Recommended concentration: 1-3µg/ml.

Species Reactivity

Tested: Human, Mouse

Expected from sequence similarity: Human, Mouse, Rat, Dog, Cow



EB10245 (1 μ g/ml) staining of Mouse Brain lysate (35 μ g protein in RIPA buffer). Primary incubation was 1 hour.
Detected by chemiluminescence.